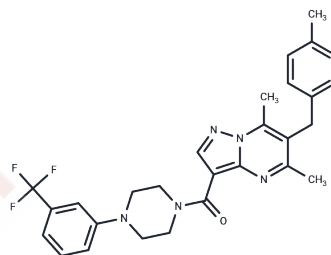


## RUVBL1/2 ATPase-IN-1

## Chemical Properties

|                   |   |
|-------------------|---|
| CAS No. :         | 423128-55-6   |
| Formula:          | C <sub>28</sub> H <sub>28</sub> F <sub>3</sub> N <sub>5</sub> O   |
| Molecular Weight: | 507.55  |
| Storage:          | Powder: -20°C for 3 years   In solvent: -80°C for 1 year<br>Actual storage temperature shall be subject to the COA. |



## Biological Description

|                            |  |
|----------------------------|--|
| Description                | RUVBL1/2 ATPase-IN-1 is an effective RUVBL1/2 ATPase inhibitor with IC <sub>50</sub> values of 6.0 and 7.7 μM, respectively. RUVBL1/2 ATPase-IN-1 can be used in cancer disease studies. |
| Targets(IC <sub>50</sub> ) | Others, Proton pump  |

## Solubility Information

|                     |   |
|---------------------|---|
| Solubility          | DMSO: 8 mg/mL (15.76 mM), Sonication and heating to 60°C are recommended. (< 1 mg/ml refers to the product slightly soluble or insoluble)   |
| In vivo Formulation | 10% DMSO+40% PEG300+5% Tween 80+45% Saline: 1 mg/mL (1.97 mM), Sonication is recommended.<br><i>Please add the solvents sequentially, clarifying the solution as much as possible before adding the next one. Dissolve by heating and/or sonication if necessary. Working solution is recommended to be prepared and used immediately. The formulation provided above is for reference purposes only. In vivo formulations may vary and should be modified based on specific experimental conditions.</i> |

## Preparing Stock Solutions

|       | 1mg       | 5mg       | 10mg       |
|-------|-----------|-----------|------------|
| 1 mM  | 1.9702 mL | 9.8512 mL | 19.7025 mL |
| 5 mM  | 0.394 mL  | 1.9702 mL | 3.9405 mL  |
| 10 mM | 0.197 mL  | 0.9851 mL | 1.9702 mL  |
| 50 mM | 0.0394 mL | 0.197 mL  | 0.394 mL   |

Please select the appropriate solvent to prepare the stock solution, according to the solubility of the product in different solvents. Please use it as soon as possible.

Note: The dilution table applies only to solid products. For liquid products, please calculate the stock solution based on the stated concentration and/or density.

Reference

Zhang G, et al. Discovery of small-molecule inhibitors of RUVBL1/2 ATPase. Bioorg Med Chem. 2022;62:116726.

**Inhibitor · Natural Compounds · Compound Libraries · Recombinant Proteins**

This product is for Research Use Only · Not for Human or Veterinary or Therapeutic Use

Tel:781-999-4286 E\_mail:info@targetmol.com Address:34 Washington Street,Wellesley Hills,MA 02481