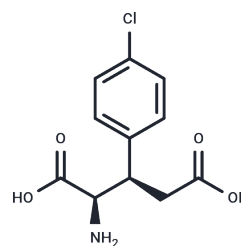


(2R,3S)-Chlorpheg

Chemical Properties

CAS No. :	140924-23-8
Formula:	C ₁₁ H ₁₂ ClNO ₄
Molecular Weight:	257.67
Storage:	Powder: -20°C for 3 years In solvent: -80°C for 1 year Actual storage temperature shall be subject to the COA.



Biological Description

Description	(2R,3S)-Chlorpheg is a NMDA receptor antagonist.
Targets(IC50)	Others, iGluR

Solubility Information

Solubility	1eq. NaOH: <19.33 mg/mL, Sonication is recommended. (< 1 mg/ml refers to the product slightly soluble or insoluble)
------------	--

Preparing Stock Solutions

	1mg	5mg	10mg
1 mM	3.8809 mL	19.4047 mL	38.8093 mL
5 mM	0.7762 mL	3.8809 mL	7.7619 mL
10 mM	0.3881 mL	1.9405 mL	3.8809 mL
50 mM	0.0776 mL	0.3881 mL	0.7762 mL

Please select the appropriate solvent to prepare the stock solution, according to the solubility of the product in different solvents. Please use it as soon as possible.

Note: The dilution table applies only to solid products. For liquid products, please calculate the stock solution based on the stated concentration and/or density.

Inhibitor · Natural Compounds · Compound Libraries · Recombinant Proteins

This product is for Research Use Only · Not for Human or Veterinary or Therapeutic Use

Tel: 781-999-4286 E_mail: info@targetmol.com Address: 34 Washington Street, Wellesley Hills, MA 02481