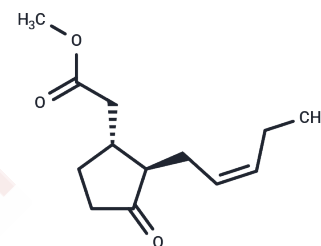


## Methyl jasmonate

## Chemical Properties

CAS No. :	1211-29-6
Formula:	C13H20O3
Molecular Weight:	224.3
Storage:	Keep away from moisture Pure form: -20°C for 3 years   In solvent: -80°C for 1 year

Actual storage temperature shall be subject to the COA.



## Biological Description

Description	Methyl jasmonate ((-)-Methyl jasmonate) is a hormone involved in plant signaling, inducing oxidative stress and accumulation of secondary metabolites in plant cells and organ cultures, and regulating the biosynthesis of other plant hormones. Methyl jasmonate induces plant defense responses against Andean lupin insects. Methyl jasmonate has anti-inflammatory activity.
Targets(IC50)	Others
In vitro	<b>METHODS:</b> AGS cells were treated with methyl jasmonate (10-3200 µg/mL) to determine its effects on cell viability and cell migration of AGS gastric cancer cell line. <b>RESULTS:</b> AGS cell viability decreased with increasing doses of methyl jasmonate-treated plant leaf extracts. The inhibition level was as high as 50% at a final concentration of 200 µg/mL, and a greater effect (~92%) was detected at a dose of 400 µg/mL; at all concentrations studied, methyl jasmonate-treated plant leaf extracts were able to reduce (in a dose-dependent manner) the migration ability of AGS cells. [1]

## Solubility Information

Solubility	DMSO: 80 mg/mL (356.67 mM), Sonication is recommended. (< 1 mg/ml refers to the product slightly soluble or insoluble)
In vivo Formulation	10% DMSO+40% PEG300+5% Tween 80+45% Saline: 3.3 mg/mL (14.71 mM), Sonication is recommended. <i>Please add the solvents sequentially, clarifying the solution as much as possible before adding the next one. Dissolve by heating and/or sonication if necessary. Working solution is recommended to be prepared and used immediately. The formulation provided above is for reference purposes only. In vivo formulations may vary and should be modified based on specific experimental conditions.</i>

### Preparing Stock Solutions

---

	1mg	5mg	10mg
1 mM	4.4583 mL	22.2916 mL	44.5831 mL
5 mM	0.8917 mL	4.4583 mL	8.9166 mL
10 mM	0.4458 mL	2.2292 mL	4.4583 mL
50 mM	0.0892 mL	0.4458 mL	0.8917 mL

---

Please select the appropriate solvent to prepare the stock solution, according to the solubility of the product in different solvents. Please use it as soon as possible.

Note: The dilution table applies only to solid products. For liquid products, please calculate the stock solution based on the stated concentration and/or density.

### Reference

Ribera-Fonseca A, et al. The Anti-Proliferative and Anti-Invasive Effect of Leaf Extracts of Blueberry Plants Treated with Methyl Jasmonate on Human Gastric Cancer In Vitro Is Related to Their Antioxidant Properties. *Antioxidants (Basel)*. 2020 Jan 4;9(1):45

**Inhibitor · Natural Compounds · Compound Libraries · Recombinant Proteins**

This product is for Research Use Only · Not for Human or Veterinary or Therapeutic Use

Tel:781-999-4286 E\_mail:info@targetmol.com Address:34 Washington Street,Wellesley Hills,MA 02481