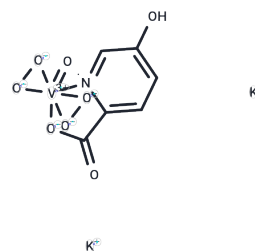


BpV(HOpic)

Chemical Properties

CAS No. :	722494-26-0
Formula:	C ₆ H ₄ K ₂ N ₀ O ₈ V
Molecular Weight:	347.24
Storage:	Powder: -20°C for 3 years Actual storage temperature shall be subject to the COA.



Biological Description

Description	BpV(HOpic) (bpV (HOpic)) is a potent inhibitor of PTEN (IC ₅₀ of 14 nM).
Targets(IC ₅₀)	PTEN
In vitro	1 μM BpV(HOpic) is capable of enhancing the migration of C2C12 myoblasts by approximately 40 % in the presence of myotube conditioned media, without significantly affecting their capacity to differentiate and fuse into multinucleated myotubes.? Improved migration of myoblasts treated with 1 μM BpV(HOpic) was associated with activation of PI3K/AKT and MAPK/ERK pathways, while their inhibition with either LY294002 or UO126, respectively, resulted in a reduction of C2C12 migration back to control levels[1]

Solubility Information

Solubility	H ₂ O: 58.75 mg/mL (169.19 mM),Sonication is recommended. DMSO: Insoluble, (< 1 mg/ml refers to the product slightly soluble or insoluble)
------------	---

Preparing Stock Solutions

	1mg	5mg	10mg
1 mM	2.8799 mL	14.3993 mL	28.7985 mL
5 mM	0.576 mL	2.8799 mL	5.7597 mL
10 mM	0.288 mL	1.4399 mL	2.8799 mL
50 mM	0.0576 mL	0.288 mL	0.576 mL

Please select the appropriate solvent to prepare the stock solution, according to the solubility of the product in different solvents. Please use it as soon as possible.

Note: The dilution table applies only to solid products. For liquid products, please calculate the stock solution based on the stated concentration and/or density.

Reference

Dimchev GA, Al-Shanti N, Stewart CE. Phospho-tyrosine phosphatase inhibitor Bpv(Hopic) enhances C2C12 myoblast migration in vitro. Requirement of PI3K/AKT and MAPK/ERK pathways. *J Muscle Res Cell Motil.* 2013 May; 34(2):125-36.

Schmid A C , Byrne R D , Ramón Vilar, et al. Bisperoxovanadium compounds are potent PTEN inhibitors[J]. *Febs Letters*, 2004, 566(1-3):0-38.

Inhibitor · Natural Compounds · Compound Libraries · Recombinant Proteins

This product is for Research Use Only · Not for Human or Veterinary or Therapeutic Use

Tel:781-999-4286 E_mail:info@targetmol.com Address:34 Washington Street,Wellesley Hills,MA 02481