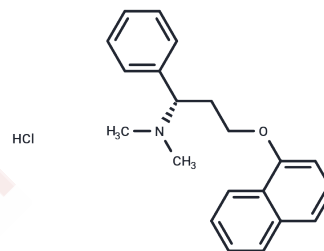


Dapoxetine hydrochloride

Chemical Properties

CAS No. :	129938-20-1
Formula:	C ₂₁ H ₂₃ NO·HCl
Molecular Weight:	341.87
Storage:	Powder: -20°C for 3 years In solvent: -80°C for 1 year Actual storage temperature shall be subject to the COA.



Biological Description

Description	Dapoxetine hydrochloride (LY-210448 hydrochloride) is a selectivity short-acting serotonin reuptake inhibitor, used for the therapy of premature ejaculation.
Targets(IC50)	5-HT Receptor, Serotonin Transporter
Kinase Assay	PKA enzyme activity: cAMP-dependent protein kinase activity is assayed in a reaction mixture containing, in a final volume of 0.2 mL, 50 mM Tris-HCl (pH 7.0), 10 mM magnesium acetate, 2 mM EGTA, 1 μM cAMP or absence of cAMP, 3.3-20 μM [γ-32P]ATP (4 × 10 ⁵ cpm), 0.5 μg of the enzyme, 100 μg of histone H2B, and each compound, as indicated.

Solubility Information

Solubility	H ₂ O: 25.6 mg/mL (74.88 mM), Sonication is recommended. DMSO: 50 mg/mL (146.25 mM), Sonication is recommended. (< 1 mg/ml refers to the product slightly soluble or insoluble)
------------	---------------------------------------------------------------------------------------------------------------------------------------------------------------------------------------------------

Preparing Stock Solutions

	1mg	5mg	10mg
1 mM	2.9251 mL	14.6254 mL	29.2509 mL
5 mM	0.585 mL	2.9251 mL	5.8502 mL
10 mM	0.2925 mL	1.4625 mL	2.9251 mL
50 mM	0.0585 mL	0.2925 mL	0.585 mL

Please select the appropriate solvent to prepare the stock solution, according to the solubility of the product in different solvents. Please use it as soon as possible.

Note: The dilution table applies only to solid products. For liquid products, please calculate the stock solution based on the stated concentration and/or density.

Reference

Jeong I, et al. Neuropharmacology,2012, 62(7), 2261-2266.

Jeong I, et al. Naunyn Schmiedebergs Arch Pharmacol,2012, 385(7), 707-716.

Inhibitor · Natural Compounds · Compound Libraries · Recombinant Proteins

This product is for Research Use Only· Not for Human or Veterinary or Therapeutic Use

Tel:781-999-4286

E_mail:info@targetmol.com

Address:34 Washington Street,Wellesley Hills,MA 02481