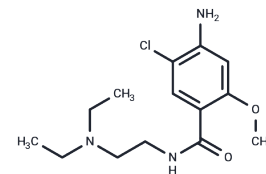


Metoclopramide hydrochloride

Chemical Properties

CAS No. :	7232-21-5
Formula:	C ₁₄ H ₂₂ ClN ₃ O ₂ ·HCl
Molecular Weight:	336.26
Storage:	Powder: -20°C for 3 years In solvent: -80°C for 1 year Actual storage temperature shall be subject to the COA.



Biological Description

Description	Metoclopramide hydrochloride (Metoclopramide HCl) is a selective dopamine D ₂ receptor antagonist, used as an antiemetic.
Targets(IC ₅₀)	5-HT Receptor, AChR, Dopamine Receptor

Solubility Information

Solubility	Ethanol: 62 mg/mL (184.38 mM), Sonication is recommended. H ₂ O: 61 mg/mL (181.41 mM), Sonication is recommended. DMSO: 50 mg/mL (148.69 mM), Sonication is recommended. (< 1 mg/ml refers to the product slightly soluble or insoluble)
------------	---

Preparing Stock Solutions

	1mg	5mg	10mg
1 mM	2.9739 mL	14.8694 mL	29.7389 mL
5 mM	0.5948 mL	2.9739 mL	5.9478 mL
10 mM	0.2974 mL	1.4869 mL	2.9739 mL
50 mM	0.0595 mL	0.2974 mL	0.5948 mL

Please select the appropriate solvent to prepare the stock solution, according to the solubility of the product in different solvents. Please use it as soon as possible.

Note: The dilution table applies only to solid products. For liquid products, please calculate the stock solution based on the stated concentration and/or density.

Reference

Burger DM, et al. J Vet Med A Physiol Pathol Clin Med. 2006 Mar;53(2):97-107.

Inhibitor · Natural Compounds · Compound Libraries · Recombinant Proteins

This product is for Research Use Only · Not for Human or Veterinary or Therapeutic Use

Tel:781-999-4286 E_mail:info@targetmol.com Address:34 Washington Street,Wellesley Hills,MA 02481