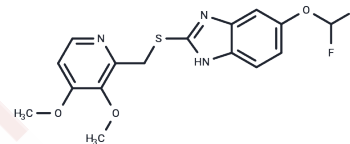


Pantoprazole Sulfide

Chemical Properties

| | |
|-------------------|---|
| CAS No. : | 102625-64-9 |
| Formula: | C ₁₆ H ₁₅ F ₂ N ₃ O ₃ S |
| Molecular Weight: | 367.37 |
| Storage: | Powder: -20°C for 3 years In solvent: -80°C for 1 year Actual storage temperature shall be subject to the COA. |



Biological Description

| | |
|---------------|---|
| Description | Pantoprazole sulfide is a metabolite of the gastric H ⁺ /K ⁺ ATPase pump inhibitor pantoprazole . Pantoprazole is metabolized by the cytochrome P450 (CYP) isomers CYP2C19 and CYP3A4 to form pantoprazole sulfide. |
| Targets(IC50) | Others,Proton pump,Drug Metabolite |

Solubility Information

| | |
|------------|--|
| Solubility | DMF:PBS(pH 7.2)(1:1): 0.5 mg/mL (1.36 mM),Sonication is recommended. Ethanol: 25 mg/mL (68.05 mM),Sonication is recommended. DMSO: 30 mg/mL (81.66 mM),Sonication is recommended. DMF: 30 mg/mL (81.66 mM),Sonication is recommended. (< 1 mg/ml refers to the product slightly soluble or insoluble) |
|------------|--|

Preparing Stock Solutions

| | 1mg | 5mg | 10mg |
|-------|-----------|------------|------------|
| 1 mM | 2.7221 mL | 13.6103 mL | 27.2205 mL |
| 5 mM | 0.5444 mL | 2.7221 mL | 5.4441 mL |
| 10 mM | 0.2722 mL | 1.361 mL | 2.7221 mL |
| 50 mM | 0.0544 mL | 0.2722 mL | 0.5444 mL |

Please select the appropriate solvent to prepare the stock solution, according to the solubility of the product in different solvents. Please use it as soon as possible.

Note: The dilution table applies only to solid products. For liquid products, please calculate the stock solution based on the stated concentration and/or density.

Inhibitor · Natural Compounds · Compound Libraries · Recombinant Proteins

This product is for Research Use Only· Not for Human or Veterinary or Therapeutic Use

Tel:781-999-4286 E_mail:info@targetmol.com Address:34 Washington Street,Wellesley Hills,MA 02481