

Acequinocyl

Chemical Properties

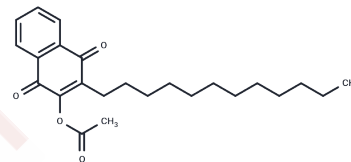
CAS No. : 57960-19-7

Formula: C₂₄H₃₂O₄

Molecular Weight: 384.51

Storage: Powder: -20°C for 3 years | In solvent: -80°C for 1 year

Actual storage temperature shall be subject to the COA.



Biological Description

Description	Acequinocyl is used as a pesticide.
Targets(IC50)	Others,Parasite

Preparing Stock Solutions

	1mg	5mg	10mg
1 mM	2.6007 mL	13.0036 mL	26.0071 mL
5 mM	0.5201 mL	2.6007 mL	5.2014 mL
10 mM	0.2601 mL	1.3004 mL	2.6007 mL
50 mM	0.052 mL	0.2601 mL	0.5201 mL

Please select the appropriate solvent to prepare the stock solution, according to the solubility of the product in different solvents. Please use it as soon as possible.

Note: The dilution table applies only to solid products. For liquid products, please calculate the stock solution based on the stated concentration and/or density.

Reference

Put K, Bollens T, Wäckers F, Pekas A. Non-target effects of commonly used plant protection products in roses on the predatory mite *Euseius gallicus* Kreiter & Tixier (Acari: Phytoseiidae). *Pest Manag Sci*. 2016 Jul;72(7):1373-80. doi: 10.1002/ps.4162. Epub 2015 Nov 4. PubMed PMID: 26434923.

Abraham CM, Braman SK, Oetting RD, Hinkle NC. Pesticide compatibility with natural enemies for pest management in greenhouse gerbera daisies. *J Econ Entomol*. 2013 Aug;106(4):1590-601. PubMed PMID: 24020270.

Lee KG, Lee SK. Monitoring and risk assessment of pesticide residues in yuza fruits (*Citrus junos* Sieb. ex Tanaka) and yuza tea samples produced in Korea. *Food Chem*. 2012 Dec 15;135(4):2930-3. doi: 10.1016/j.foodchem.2012.06.111. Epub 2012 Jul 13. PubMed PMID: 22980892.

Rodrigues JC, Peña JE. Chemical control of the red palm mite, *Raoiella indica* (Acari: Tenuipalpidae) in banana and coconut. *Exp Appl Acarol*. 2012 Aug;57(3-4):317-29. doi: 10.1007/s10493-011-9493-x. Epub 2011 Oct 9. PubMed PMID: 21983877.

Inhibitor · Natural Compounds · Compound Libraries · Recombinant Proteins

This product is for Research Use Only · Not for Human or Veterinary or Therapeutic Use

Tel:781-999-4286 E_mail:info@targetmol.com Address:34 Washington Street,Wellesley Hills,MA 02481