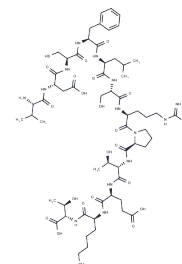


## Peptide5

## Chemical Properties

CAS No. :	916977-43-0
Formula:	C60H98N16O20S
Molecular Weight:	1395.6
Storage:	Keep away from moisture Powder: -20°C for 3 years   In solvent: -80°C for 1 year <small>Actual storage temperature shall be subject to the COA.</small>



## Biological Description

Description	Connexin43 mimetic peptide. Reduces swelling, astrogliosis, neuroinflammation and neuronal cell death following spinal cord injury ex vivo and in vivo. Exhibits analgesic effects in models of neuropathic pain.
Targets(IC50)	Gap Junction Protein

## Solubility Information

Solubility	DMSO: Soluble (< 1 mg/ml refers to the product slightly soluble or insoluble)
------------	--

## Preparing Stock Solutions

	1mg	5mg	10mg
1 mM	0.7165 mL	3.5827 mL	7.1654 mL
5 mM	0.1433 mL	0.7165 mL	1.4331 mL
10 mM	0.0717 mL	0.3583 mL	0.7165 mL
50 mM	0.0143 mL	0.0717 mL	0.1433 mL

Please select the appropriate solvent to prepare the stock solution, according to the solubility of the product in different solvents. Please use it as soon as possible.

Note: The dilution table applies only to solid products. For liquid products, please calculate the stock solution based on the stated concentration and/or density.

### Reference

O'Carroll et al (2008) Connexin 43 mimetic peptides reduce swelling, astrogliosis and neuronal cell death after spinal cord injury. *Cell.Commun.Adhes.* 15 27 PMID:18649176

Mao et al (2017) Characterisation of Peptide5 systemic administration for treating traumatic spinal cord injured rats. *Exp.Brain.Res.* 235 3033 PMID:28725925

Kim et al (2017) Characterising the mode of action of extracellular Connexin43 channel mimetic peptides in an in vitro ischemia injury model. *Biochem.Biophys.Acta.* 1861 68 PMID:27816754

Tonkin et al (2017) Attenuation of mechanical pain hypersensitivity by treatment with Peptide5, a connexin-43 mimetic peptide, involves inhibition of NLRP3 inflammasome in nerve-injured mice. *Exp.Neurol.* 300 1 PMID: 29055716

**Inhibitor · Natural Compounds · Compound Libraries · Recombinant Proteins**

This product is for Research Use Only · Not for Human or Veterinary or Therapeutic Use

Tel:781-999-4286 E\_mail:info@targetmol.com Address:34 Washington Street,Wellesley Hills,MA 02481