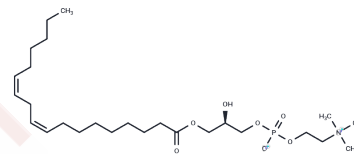


Lysophosphatidylcholine 18:2

Chemical Properties

CAS No. :	22252-07-9
Formula:	C ₂₆ H ₅₀ N ₀ O ₇ P
Molecular Weight:	519.65
Storage:	Store under nitrogen Pure form: -20°C for 3 years In solvent: -80°C for 1 year



Actual storage temperature shall be subject to the COA.

Biological Description

Description	Lysophosphatidylcholine 18:2 is a mouse metabolite functionally related to linoleic acid. 18:2 LysoPC is a major component of oxidized low-density lipoproteins (LDLs), and low plasma levels of LPC 18:2 have been associated with metabolic disorders such as impaired glucose tolerance, insulin resistance, type 2 diabetes, and coronary artery disease. 1-Linoleoyl-2-Linoleoyl-3-Hydroxy-sn-glycero-PC is also a substrate for the generation of lysophosphatidic acid (LPA) from Autotaxin (LysoPLD), which plays an important role in cell motility.
Targets(IC50)	Endogenous Metabolite
In vitro	Lysophosphatidylcholine 18:2 is a major glycerophospholipid in human plasma and has been implicated in inflammation, insulin resistance, obesity, and type 2 diabetes.[1]

Solubility Information

Solubility	PBS (pH 7.2): 1 mg/mL (1.92 mM), Sonication is recommended. Ethanol: 80 mg/mL (153.95 mM), Sonication is recommended. (< 1 mg/ml refers to the product slightly soluble or insoluble)
------------	------------------------------------------------------------------------------------------------------------------------------------------------------------------------------------------------

Preparing Stock Solutions

	1mg	5mg	10mg
1 mM	1.9244 mL	9.6219 mL	19.2437 mL
5 mM	0.3849 mL	1.9244 mL	3.8487 mL
10 mM	0.1924 mL	0.9622 mL	1.9244 mL
50 mM	0.0385 mL	0.1924 mL	0.3849 mL

Please select the appropriate solvent to prepare the stock solution, according to the solubility of the product in different solvents. Please use it as soon as possible.

Note: The dilution table applies only to solid products. For liquid products, please calculate the stock solution based on the stated concentration and/or density.

Reference

Chen YX, et al. UHPLC/Q-TOFMS-based plasma metabolomics of polycystic ovary syndrome patients with and without insulin resistance. J Pharm Biomed Anal. 2016;121:141-150.

Gonzalez-Freire M, et al. Targeted Metabolomics Shows Low Plasma Lysophosphatidylcholine 18:2 Predicts Greater Decline of Gait Speed in Older Adults: The Baltimore Longitudinal Study of Aging. J Gerontol A Biol Sci Med Sci. 2019;74(1):62-67.

Inhibitor · Natural Compounds · Compound Libraries · Recombinant Proteins

This product is for Research Use Only · Not for Human or Veterinary or Therapeutic Use

Tel:781-999-4286 E_mail:info@targetmol.com Address:34 Washington Street,Wellesley Hills,MA 02481