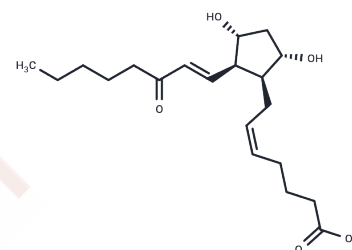


8-iso-15-keto Prostaglandin F2 α

Chemical Properties

CAS No. :	191919-01-4
Formula:	C ₂₀ H ₃₂ O ₅
Molecular Weight:	352.471
Storage:	Powder: -20°C for 3 years In solvent: -80°C for 1 year Actual storage temperature shall be subject to the COA.



Biological Description

Description	8-iso-15-keto Prostaglandin F2 α (8-iso-15-keto PGF2 α) is a metabolite of the isoprostane 8-iso PGF2 α in rabbits, monkeys, and humans. 8-iso PGF2 α is a prostaglandin-like product of non-specific lipid peroxidation. In humans and monkeys, exogenously infused 8-iso PGF2 α is converted to metabolites with 2 or 4 carbon atoms removed from the top side chain by β -oxidation, with a similar pattern observed in tritiated 8-iso PGF2 α -infused rabbits. Early in the infusion (within 1-2 minutes), 8-iso-15-keto PGF2 α is a major component of the metabolite profile, primarily comprising unmetabolized 8-iso PGF2 α . 8-iso-15-keto PGF2 α is a vasoconstrictor when tested on the rat isolated thoracic aorta, acting via the TP (thromboxane) receptor.
Targets(IC50)	Others,Prostaglandin Receptor

Solubility Information

Solubility	PBS (pH 7.2): 1 mg/mL (2.84 mM),Sonication is recommended. Ethanol: 50 mg/mL (141.86 mM),Sonication is recommended. DMF: 50 mg/mL (141.86 mM),Sonication is recommended. DMSO: 50 mg/mL (141.86 mM),Sonication is recommended. (< 1 mg/ml refers to the product slightly soluble or insoluble)
------------	--

Preparing Stock Solutions

	1mg	5mg	10mg
1 mM	2.8371 mL	14.1856 mL	28.3712 mL
5 mM	0.5674 mL	2.8371 mL	5.6742 mL
10 mM	0.2837 mL	1.4186 mL	2.8371 mL
50 mM	0.0567 mL	0.2837 mL	0.5674 mL

Please select the appropriate solvent to prepare the stock solution, according to the solubility of the product in different solvents. Please use it as soon as possible.

Note: The dilution table applies only to solid products. For liquid products, please calculate the stock solution based on the stated concentration and/or density.

Inhibitor · Natural Compounds · Compound Libraries · Recombinant Proteins

This product is for Research Use Only · Not for Human or Veterinary or Therapeutic Use

Tel:781-999-4286 E_mail:info@targetmol.com Address:34 Washington Street,Wellesley Hills,MA 02481