

SW044248

## Chemical Properties

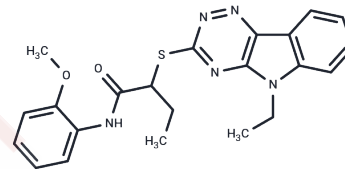
CAS No. : 522650-83-5

Formula: C22H23N5O2S

Molecular Weight: 421.52

Storage: Powder: -20°C for 3 years | In solvent: -80°C for 1 year

Actual storage temperature shall be subject to the COA.



## Biological Description

Description	SW044248 is a noncanonical Top1 inhibitor. It has selective toxicity for NSCLC cells.
Targets(IC50)	Topoisomerase
Kinase Assay	The potency of JNJ-42041935 for inhibition of the structurally related enzyme FIH is assessed by methods similar to those described for PHD2. In brief, activity of FIH is determined using purified glutathione transferase-tagged full-length FIH amino acids 1 to 350 and a synthetic HIF-1 $\alpha$ peptide corresponding to residues Asp788 to Leu822. Compounds are preincubated with 17.1 nM FIH for 30 min, followed by a 10-min incubation with 1 $\mu$ M [2- <sup>14</sup> C]2-oxoglutarate, in the presence of 10 $\mu$ M FeNH <sub>4</sub> SO <sub>4</sub> in reaction buffer. The selectivity of JNJ-42041935 for inhibition of a range of other targets available for testing in commercial assays is also assessed at concentrations of 1 and 10 $\mu$ M[1].

## Solubility Information

Solubility	DMSO: 7.14 mg/mL (16.94 mM),Sonication is recommended. (< 1 mg/ml refers to the product slightly soluble or insoluble)
------------	---

### Preparing Stock Solutions

---

	1mg	5mg	10mg
1 mM	2.3724 mL	11.8618 mL	23.7237 mL
5 mM	0.4745 mL	2.3724 mL	4.7447 mL
10 mM	0.2372 mL	1.1862 mL	2.3724 mL
50 mM	0.0474 mL	0.2372 mL	0.4745 mL

---

Please select the appropriate solvent to prepare the stock solution, according to the solubility of the product in different solvents. Please use it as soon as possible.

Note: The dilution table applies only to solid products. For liquid products, please calculate the stock solution based on the stated concentration and/or density.

#### Reference

Zubovych IO, et al. Mol Y Ther. 2016 Jan;15(1):23-36.

**Inhibitor · Natural Compounds · Compound Libraries · Recombinant Proteins**

This product is for Research Use Only · Not for Human or Veterinary or Therapeutic Use

Tel:781-999-4286 E\_mail:info@targetmol.com Address:34 Washington Street,Wellesley Hills,MA 02481