

Exarafenib

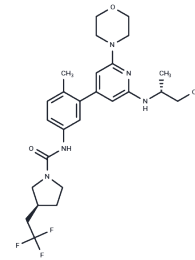
Chemical Properties

CAS No. : 2639957-39-2

Formula: C₂₆H₃₄F₃N₅O₃

Molecular Weight: 521.58

Storage: Store at low temperature, Keep away from moisture,
Keep away from direct sunlight
Powder: -20°C for 3 years | In solvent: -80°C for 1 year
Actual storage temperature shall be subject to the COA.



Biological Description

Description	Exarafenib (RAF/KIN_2787) is a potent, orally available pan-RAF inhibitor with antitumor activity that acts by inhibiting downstream MAPK pathway signaling. It is used in cancer research.
Targets(IC50)	Raf,p38 MAPK

Solubility Information

Solubility	DMSO: 250 mg/mL (479.31 mM), Sonication is recommended. (< 1 mg/ml refers to the product slightly soluble or insoluble)
In vivo Formulation	10% DMSO+40% PEG300+5% Tween 80+45% Saline: 2 mg/mL (3.83 mM), Sonication is recommended. <i>Please add the solvents sequentially, clarifying the solution as much as possible before adding the next one. Dissolve by heating and/or sonication if necessary. Working solution is recommended to be prepared and used immediately. The formulation provided above is for reference purposes only. In vivo formulations may vary and should be modified based on specific experimental conditions.</i>

Preparing Stock Solutions

	1mg	5mg	10mg
1 mM	1.9173 mL	9.5863 mL	19.1725 mL
5 mM	0.3835 mL	1.9173 mL	3.8345 mL
10 mM	0.1917 mL	0.9586 mL	1.9173 mL
50 mM	0.0383 mL	0.1917 mL	0.3835 mL

Please select the appropriate solvent to prepare the stock solution, according to the solubility of the product in different solvents. Please use it as soon as possible.

Note: The dilution table applies only to solid products. For liquid products, please calculate the stock solution based on the stated concentration and/or density.

Reference

Miller N, et, al. Antitumor activity of KIN-2787, a next-generation pan-RAF inhibitor, in combination with MEK inhibition in preclinical models of human NRAS mutant melanoma.2022 Jun 2;40(16): e15099.

Inhibitor · Natural Compounds · Compound Libraries · Recombinant Proteins

This product is for Research Use Only· Not for Human or Veterinary or Therapeutic Use

Tel:781-999-4286 E_mail:info@targetmol.com Address:34 Washington Street,Wellesley Hills,MA 02481