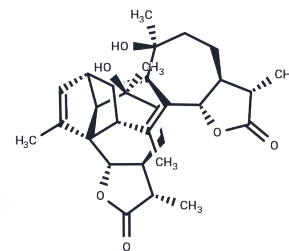


Absinthin

Chemical Properties

CAS No. :	1362-42-1
Formula:	C ₃₀ H ₄₀ O ₆
Molecular Weight:	496.64
Storage:	Powder: -20°C for 3 years In solvent: -80°C for 1 year Actual storage temperature shall be subject to the COA.



Biological Description

Description	Absinthin (Absynthin) is a weak HIV-1 protease inhibitor.
Targets(IC50)	HIV Protease

Solubility Information

Solubility	Chloroform, Dichloromethane, Ethyl Acetate, Acetone, etc.: Soluble, DMSO: Soluble, (< 1 mg/ml refers to the product slightly soluble or insoluble)
------------	---

Preparing Stock Solutions

	1mg	5mg	10mg
1 mM	2.0135 mL	10.0677 mL	20.1353 mL
5 mM	0.4027 mL	2.0135 mL	4.0271 mL
10 mM	0.2014 mL	1.0068 mL	2.0135 mL
50 mM	0.0403 mL	0.2014 mL	0.4027 mL

Please select the appropriate solvent to prepare the stock solution, according to the solubility of the product in different solvents. Please use it as soon as possible.

Note: The dilution table applies only to solid products. For liquid products, please calculate the stock solution based on the stated concentration and/or density.

Reference

Japanese Journal of Food Chemistry, 2004, 11(2): 86-90.

Inhibitor · Natural Compounds · Compound Libraries · Recombinant Proteins

This product is for Research Use Only · Not for Human or Veterinary or Therapeutic Use

Tel:781-999-4286 E_mail:info@targetmol.com Address:34 Washington Street,Wellesley Hills,MA 02481