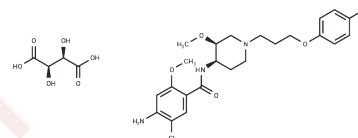


## Cisapride tartrate

## Chemical Properties

CAS No. :	189888-25-3
Formula:	C <sub>27</sub> H <sub>35</sub> ClFN <sub>3</sub> O <sub>10</sub>
Molecular Weight:	616.04
Storage:	Powder: -20°C for 3 years   In solvent: -80°C for 1 year Actual storage temperature shall be subject to the COA.



## Biological Description

Description	Cisapride tartrate is chemically related to metoclopramide, but unlike metoclopramide, it does not cross the blood-brain barrier or have antidopaminergic effects. Cisapride is a serotonin-4 (5-HT <sub>4</sub> ) receptor agonist. Cisapride was indicated for the symptomatic treatment of adult patients with nocturnal heartburn due to gastroesophageal reflux disease. The Food and Drug Administration (FDA) in America stopped the marketing of cisapride as of 14th July 2000. They had received at least 341 reports of heart rhythm abnormalities and these led to 80 deaths. Other reported adverse effects are: headache, diarrhea, abdominal pain, nausea, constipation. Cisapride for animals has been found helpful in some cases of megaesophagus and is a common treatment for feline megacolon. Clarithromycin, erythromycin, and troleandomycin markedly inhibit the metabolism of cisapride. Concurrent administration of certain anticholinergic compounds, such as belladonna alkaloids and dicyclomine, would be e.....
Targets(IC50)	Others

## Preparing Stock Solutions

	1mg	5mg	10mg
1 mM	1.6233 mL	8.1164 mL	16.2327 mL
5 mM	0.3247 mL	1.6233 mL	3.2465 mL
10 mM	0.1623 mL	0.8116 mL	1.6233 mL
50 mM	0.0325 mL	0.1623 mL	0.3247 mL

Please select the appropriate solvent to prepare the stock solution, according to the solubility of the product in different solvents. Please use it as soon as possible.

Note: The dilution table applies only to solid products. For liquid products, please calculate the stock solution based on the stated concentration and/or density.

**Inhibitor · Natural Compounds · Compound Libraries · Recombinant Proteins**

This product is for Research Use Only · Not for Human or Veterinary or Therapeutic Use

Tel:781-999-4286 E\_mail:info@targetmol.com Address:34 Washington Street,Wellesley Hills,MA 02481