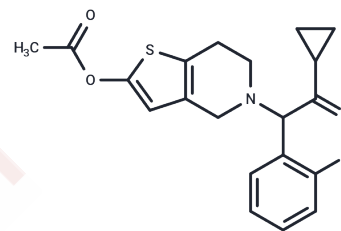


Prasugrel

Chemical Properties

CAS No. :	150322-43-3
Formula:	C ₂₀ H ₂₀ FNO ₃ S
Molecular Weight:	373.44
Storage:	Powder: -20°C for 3 years In solvent: -80°C for 1 year Actual storage temperature shall be subject to the COA.



Biological Description

Description	Prasugrel (CS-747) is a piperazine derivative and PLATELET AGGREGATION INHIBITOR that is used to prevent THROMBOSIS in patients with ACUTE CORONARY SYNDROME; UNSTABLE ANGINA and MYOCARDIAL INFARCTION, as well as in those undergoing PERCUTANEOUS CORONARY INTERVENTIONS.
Targets(IC50)	P2Y Receptor
In vitro	Prasugrel has a faster, higher and more reliable platelet aggregation inhibitory effect than clopidogrel and is metabolized in vivo to an active metabolite with selective P2Y (12) antagonistic activity.
In vivo	Prasugrel has a faster, higher and more reliable platelet aggregation inhibitory effect than clopidogrel and is metabolized in vivo to an active metabolite with selective P2Y (12) antagonistic activity.

Solubility Information

Solubility	DMSO: 45 mg/mL (120.5 mM),Sonication is recommended. (< 1 mg/ml refers to the product slightly soluble or insoluble)
In vivo Formulation	10% DMSO+40% PEG300+5% Tween 80+45% Saline: 2 mg/mL (5.36 mM),Sonication is recommended. <i>Please add the solvents sequentially, clarifying the solution as much as possible before adding the next one. Dissolve by heating and/or sonication if necessary. Working solution is recommended to be prepared and used immediately. The formulation provided above is for reference purposes only. In vivo formulations may vary and should be modified based on specific experimental conditions.</i>

Preparing Stock Solutions

	1mg	5mg	10mg
1 mM	2.6778 mL	13.389 mL	26.7781 mL
5 mM	0.5356 mL	2.6778 mL	5.3556 mL
10 mM	0.2678 mL	1.3389 mL	2.6778 mL
50 mM	0.0536 mL	0.2678 mL	0.5356 mL

Please select the appropriate solvent to prepare the stock solution, according to the solubility of the product in different solvents. Please use it as soon as possible.

Note: The dilution table applies only to solid products. For liquid products, please calculate the stock solution based on the stated concentration and/or density.

Reference

Hashimoto M, et al. *Biochem Pharmacol*, 2007, 74(7), 1003-1009.

Ogawa T, et al. *Eur J Pharmacol*, 2009, 612(1-3), 29-34.

Niitsu Y, et al. *Eur J Pharmacol*, 2008, 579(1-3), 276-282.

Inhibitor · Natural Compounds · Compound Libraries · Recombinant Proteins

This product is for Research Use Only · Not for Human or Veterinary or Therapeutic Use

Tel:781-999-4286 E_mail:info@targetmol.com Address:34 Washington Street,Wellesley Hills,MA 02481