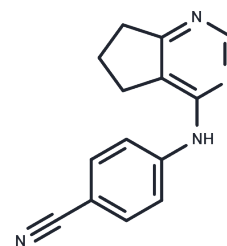


RS 2232

Chemical Properties

CAS No. : 85073-83-2
 Formula: C₁₄H₁₂N₄
 Molecular Weight: 236.27
 Storage: Powder: -20°C for 3 years | In solvent: -80°C for 1 year
 Actual storage temperature shall be subject to the COA.



Biological Description

Description	RS 2232 is an antidepressant found to be a competitive 5-HT inhibitor.
Targets(IC50)	Others

Preparing Stock Solutions

	1mg	5mg	10mg
1 mM	4.2324 mL	21.1622 mL	42.3245 mL
5 mM	0.8465 mL	4.2324 mL	8.4649 mL
10 mM	0.4232 mL	2.1162 mL	4.2324 mL
50 mM	0.0846 mL	0.4232 mL	0.8465 mL

Please select the appropriate solvent to prepare the stock solution, according to the solubility of the product in different solvents. Please use it as soon as possible.

Note: The dilution table applies only to solid products. For liquid products, please calculate the stock solution based on the stated concentration and/or density.

Reference

Yokoyama T, Iwata N, Kobayashi T. RS-2232, a compound with a reversible and specific type-A monoamine oxidase inhibiting property in mouse brain. *Jpn J Pharmacol.* 1987 Aug;44(4):421-7. PubMed PMID: 3682407.
 Yokoyama T, Kamioka T, Iwata N, Kobayashi T. Effects of RS-2232, a potential antidepressant, on the levels of monoamines, precursor amino acids and their related metabolites in mouse brain. *Jpn J Pharmacol.* 1987 Aug;44(4):413-20. PubMed PMID: 3682406.

Inhibitor · Natural Compounds · Compound Libraries · Recombinant Proteins

This product is for Research Use Only · Not for Human or Veterinary or Therapeutic Use

Tel:781-999-4286 E_mail:info@targetmol.com Address:34 Washington Street,Wellesley Hills,MA 02481