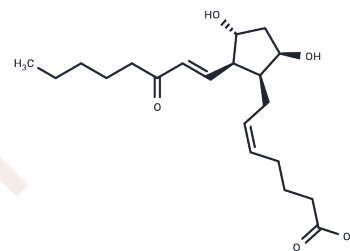


8-iso-15-keto Prostaglandin F2 β

Chemical Properties

CAS No. :	1621482-36-7
Formula:	C ₂₀ H ₃₂ O ₅
Molecular Weight:	352.471
Storage:	Powder: -20°C for 3 years In solvent: -80°C for 1 year Actual storage temperature shall be subject to the COA.



Biological Description

Description	8-iso Prostaglandin F2 β (8-iso PGF2 β) is an isomer of PGF2 α of non-enzymatic origin. It is one of 64 possible isomers of PGF2 α which can be produced by free radical peroxidation of arachidonic acid. 8-iso PGF2 β exhibits very weak contraction of human umbilical vein artery and does not promote aggregation of human whole blood. However, 8-iso PGF2 β moderately contracts both the canine and porcine pulmonary vein, although the effect is much weaker than that exhibited by other isoprostanes such as 8-iso PGE1, 8-iso PGE2, or 8-iso PGF2 α . 8-iso-15-keto PGF2 β is a potential metabolite of 8-iso PGF2 β via the 15-hydroxy PG dehydrogenase pathway. There are no published reports on the formation or biological activity of 8-iso-15-keto PGF2 β .
Targets(IC50)	Others,Endogenous Metabolite

Solubility Information

Solubility	DMSO: 50 mg/mL (141.86 mM),Sonication is recommended. Ethanol: 50 mg/mL (141.86 mM),Sonication is recommended. DMF: 50 mg/mL (141.86 mM),Sonication is recommended. PBS (pH 7.2): 1 mg/mL (2.84 mM),Sonication is recommended. (< 1 mg/ml refers to the product slightly soluble or insoluble)
------------	--

Preparing Stock Solutions

	1mg	5mg	10mg
1 mM	2.8371 mL	14.1856 mL	28.3712 mL
5 mM	0.5674 mL	2.8371 mL	5.6742 mL
10 mM	0.2837 mL	1.4186 mL	2.8371 mL
50 mM	0.0567 mL	0.2837 mL	0.5674 mL

Please select the appropriate solvent to prepare the stock solution, according to the solubility of the product in different solvents. Please use it as soon as possible.

Note: The dilution table applies only to solid products. For liquid products, please calculate the stock solution based on the stated concentration and/or density.

Inhibitor · Natural Compounds · Compound Libraries · Recombinant Proteins

This product is for Research Use Only · Not for Human or Veterinary or Therapeutic Use

Tel:781-999-4286 E_mail:info@targetmol.com Address:34 Washington Street,Wellesley Hills,MA 02481