

Tesmilifene fumarate

Chemical Properties

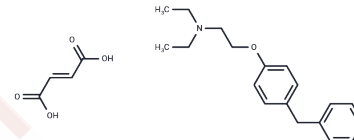
CAS No. : 1185241-83-1

Formula: C₂₃H₂₉N₂O₅

Molecular Weight: 399.48

Storage: Powder: -20°C for 3 years | In solvent: -80°C for 1 year

Actual storage temperature shall be subject to the COA.



Biological Description

| | |
|---------------|---|
| Description | Tesmilifene fumarate (DPPE fumarate) (DPPE fumarate) is an H1C receptor antagonist. |
| Targets(IC50) | Histamine Receptor |
| In vitro | Tesmilifene may indirectly modulate the effects of 12(S)-HETE in cancer cells, influencing the susceptibility of cellular DNA to chemotherapy[1]. |
| In vivo | Tesmilifene (DPPE, 20 mg/kg (s.c.) and 20 µg (icv in 5 µL)) potentiated seizures induced by both convulsants[2]. |

Solubility Information

| | |
|---------------------|---|
| Solubility | DMSO: 248 mg/mL (620.81 mM),Sonication is recommended. (< 1 mg/ml refers to the product slightly soluble or insoluble) |
| In vivo Formulation | 10% DMSO+40% PEG300+5% Tween 80+45% Saline: 5 mg/mL (12.52 mM),Sonication is recommended. <i>Please add the solvents sequentially, clarifying the solution as much as possible before adding the next one. Dissolve by heating and/or sonication if necessary. Working solution is recommended to be prepared and used immediately. The formulation provided above is for reference purposes only. In vivo formulations may vary and should be modified based on specific experimental conditions.</i> |

Preparing Stock Solutions

| | 1mg | 5mg | 10mg |
|-------|-----------|------------|------------|
| 1 mM | 2.5033 mL | 12.5163 mL | 25.0325 mL |
| 5 mM | 0.5007 mL | 2.5033 mL | 5.0065 mL |
| 10 mM | 0.2503 mL | 1.2516 mL | 2.5033 mL |
| 50 mM | 0.0501 mL | 0.2503 mL | 0.5007 mL |

Please select the appropriate solvent to prepare the stock solution, according to the solubility of the product in different solvents. Please use it as soon as possible.

Note: The dilution table applies only to solid products. For liquid products, please calculate the stock solution based on the stated concentration and/or density.

Reference

Mark Vincent, et al. Tasmilifene may enhance breast cancer chemotherapy by killing a clone of aggressive, multi-drug resistant cells through its action on the p-glycoprotein pump. *Med Hypotheses*. 2006;66(4):715-31.

G Sturman, et al. Modulation of the intracellular and H3-histamine receptors and chemically-induced seizures in mice *Agents Actions*. 1994 Jun;41 Spec No:C68-9.

Inhibitor · Natural Compounds · Compound Libraries · Recombinant Proteins

This product is for Research Use Only · Not for Human or Veterinary or Therapeutic Use

Tel:781-999-4286 E_mail:info@targetmol.com Address:34 Washington Street,Wellesley Hills,MA 02481