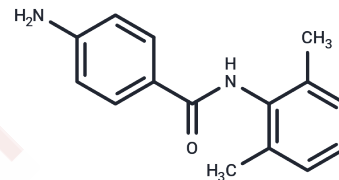


Ameltolide

Chemical Properties

CAS No. :	787-93-9
Formula:	C ₁₅ H ₁₆ N ₂ O
Molecular Weight:	240.3
Storage:	Powder: -20°C for 3 years In solvent: -80°C for 1 year Actual storage temperature shall be subject to the COA.



Biological Description

Description	Ameltolide is an anticonvulsant agent. It has been shown to be effective at inhibiting seizures in animal models.
Targets(IC50)	Others

Solubility Information

Solubility	DMSO: 45 mg/mL (187.27 mM), Sonication is recommended. (< 1 mg/ml refers to the product slightly soluble or insoluble)
------------	---

Preparing Stock Solutions

	1mg	5mg	10mg
1 mM	4.1615 mL	20.8073 mL	41.6146 mL
5 mM	0.8323 mL	4.1615 mL	8.3229 mL
10 mM	0.4161 mL	2.0807 mL	4.1615 mL
50 mM	0.0832 mL	0.4161 mL	0.8323 mL

Please select the appropriate solvent to prepare the stock solution, according to the solubility of the product in different solvents. Please use it as soon as possible.

Note: The dilution table applies only to solid products. For liquid products, please calculate the stock solution based on the stated concentration and/or density.

Reference

Iman M, et al. Docking, Synthesis and Anticonvulsant Activity of N-substituted Isoindoline-1,3-dione. Iran J Pharm Res. 2017 Spring;16(2):586-595.

Iman M, Saadabadi A, Davood A. Docking studies of phthalimide pharmacophore as a sodium channel blocker. Iran J Basic Med Sci. 2013 Sep;16(9):1016-21.

Territo PR, et al. Nonlinear mixed effects pharmacokinetic/pharmacodynamic analysis of the anticonvulsant ameltolide (LY201116) in a canine seizure model. J Vet Pharmacol Ther. 2008 Dec;31(6):562-70.

Yogeeswari P, et al. Synthesis and anticonvulsant activity of 4-(2-(2,6-dimethylphenylamino)-2-oxoethylamino)-N-(substituted)butanamides: a pharmacophoric hybrid approach. Bioorg Med Chem Lett. 2007 Jul 1;17(13):3712-5. Epub 2007 Apr 13.

Inhibitor · Natural Compounds · Compound Libraries · Recombinant Proteins

This product is for Research Use Only · Not for Human or Veterinary or Therapeutic Use

Tel:781-999-4286 E_mail:info@targetmol.com Address:34 Washington Street,Wellesley Hills,MA 02481