

GSHtracer

Chemical Properties

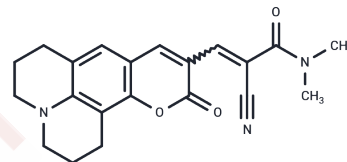
CAS No. : 1479071-34-5

Formula: C₂₁H₂₁N₃O₃

Molecular Weight: 363.42

Storage: Powder: -20°C for 3 years | In solvent: -80°C for 1 year

Actual storage temperature shall be subject to the COA.



Biological Description

Description	GSHtracer is a ratiometric fluorescent probe specifically designed for quantitative measurement of intracellular glutathione concentrations, exhibiting a distinct excitation-emission shift from 520/580 nm to 430/510 nm upon GSH binding, GSHtracer is widely used in redox biology research to monitor cellular oxidative stress, antioxidant capacity, and glutathione-dependent signaling pathways.
Targets(IC50)	Others

Preparing Stock Solutions

	1mg	5mg	10mg
1 mM	2.7516 mL	13.7582 mL	27.5164 mL
5 mM	0.5503 mL	2.7516 mL	5.5033 mL
10 mM	0.2752 mL	1.3758 mL	2.7516 mL
50 mM	0.055 mL	0.2752 mL	0.5503 mL

Please select the appropriate solvent to prepare the stock solution, according to the solubility of the product in different solvents. Please use it as soon as possible.

Note: The dilution table applies only to solid products. For liquid products, please calculate the stock solution based on the stated concentration and/or density.

Reference

Eui Man Jeong, et al. Real-Time Monitoring of Glutathione in Living Cells Reveals that High Glutathione Levels Are Required to Maintain Stem Cell Function. Stem Cell Reports. 2018 Feb 13;10(2):600-614.

Inhibitor · Natural Compounds · Compound Libraries · Recombinant Proteins

This product is for Research Use Only · Not for Human or Veterinary or Therapeutic Use

Tel:781-999-4286 E_mail:info@targetmol.com Address:34 Washington Street,Wellesley Hills,MA 02481