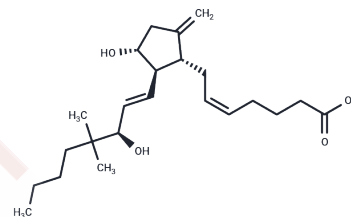


## 9-deoxy-9-methylene-16,16-dimethyl Prostaglandin E2

## Chemical Properties

CAS No. : 61263-35-2  
 Formula: C<sub>23</sub>H<sub>38</sub>O<sub>4</sub>  
 Molecular Weight: 378.553  
 Storage: Powder: -20°C for 3 years | In solvent: -80°C for 1 year  
 Actual storage temperature shall be subject to the COA.



## Biological Description

Description	9-deoxy-9-methylene-16,16-dimethyl Prostaglandin E2 (Meteneprost) is a potent analog of prostaglandin E2 with an extended half-life in vivo. In combination with various other prostaglandin derivatives, it results in the termination of first trimester pregnancy in monkeys. A single intramuscular injection containing 0.5 mg of meteneprost and 7.5 mg of 17-phenyl trinor PGF1 $\alpha$ is very effective in terminating early pregnancy. This prostaglandin mixture is ineffective on monkeys in their third trimester of pregnancy. Meteneprost, when compared to PGE2 and PGF1 $\alpha$ , in monkey and rat, does not result in unwanted side effects such as fever or gastrointestinal problems.
Targets(IC50)	Others,Prostaglandin Receptor

## Solubility Information

Solubility	DMSO: >100 mg/mL (from PGE2),Sonication is recommended. PBS (pH 7.2): >5 mg/mL (from PGE2),Sonication is recommended. Ethanol: >100 mg/mL (from PGE2),Sonication is recommended. DMF: >100 mg/mL (from PGE2),Sonication is recommended. (< 1 mg/ml refers to the product slightly soluble or insoluble)
------------	---

### Preparing Stock Solutions

---

	<b>1mg</b>	<b>5mg</b>	<b>10mg</b>
1 mM	2.6417 mL	13.2083 mL	26.4166 mL
5 mM	0.5283 mL	2.6417 mL	5.2833 mL
10 mM	0.2642 mL	1.3208 mL	2.6417 mL
50 mM	0.0528 mL	0.2642 mL	0.5283 mL

---

Please select the appropriate solvent to prepare the stock solution, according to the solubility of the product in different solvents. Please use it as soon as possible.

Note: The dilution table applies only to solid products. For liquid products, please calculate the stock solution based on the stated concentration and/or density.

**Inhibitor · Natural Compounds · Compound Libraries · Recombinant Proteins**

This product is for Research Use Only · Not for Human or Veterinary or Therapeutic Use

Tel:781-999-4286 E\_mail:info@targetmol.com Address:34 Washington Street,Wellesley Hills,MA 02481