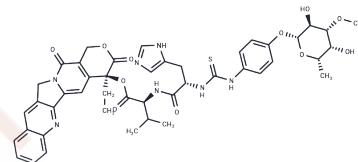


Afeletecan free base

Chemical Properties

CAS No. :	215604-75-4
Formula:	C45H49N7O11S
Molecular Weight:	895.98
Storage:	Powder: -20°C for 3 years In solvent: -80°C for 1 year Actual storage temperature shall be subject to the COA.



Biological Description

Description	Afeletecan is a water-soluble camptothecin derivative. Afeletecan stabilizes the topoisomerase I-DNA covalent complex and forms an enzyme-drug-DNA ternary complex. Both the initial cleavage reaction and religation steps are inhibited and subsequent collision of the replication fork with the cleaved strand of DNA results in inhibition of DNA replication, double-strand DNA breakage, and triggering of apoptosis.
Targets(IC50)	Others

Preparing Stock Solutions

	1mg	5mg	10mg
1 mM	1.1161 mL	5.5805 mL	11.161 mL
5 mM	0.2232 mL	1.1161 mL	2.2322 mL
10 mM	0.1116 mL	0.558 mL	1.1161 mL
50 mM	0.0223 mL	0.1116 mL	0.2232 mL

Please select the appropriate solvent to prepare the stock solution, according to the solubility of the product in different solvents. Please use it as soon as possible.

Note: The dilution table applies only to solid products. For liquid products, please calculate the stock solution based on the stated concentration and/or density.

Reference

Bayés M, Rabasseda X, Prous JR. Gateways to clinical trials. Methods Find Exp Clin Pharmacol. 2003 Jul-Aug;25(6):483-506. PubMed PMID: 12949633.

Bayés M, Rabasseda X, Prous JR. Gateways to clinical trials. March 2003. Methods Find Exp Clin Pharmacol. 2003 Mar;25(2):145-68. PubMed PMID: 12731460.

Inhibitor · Natural Compounds · Compound Libraries · Recombinant Proteins

This product is for Research Use Only · Not for Human or Veterinary or Therapeutic Use

Tel:781-999-4286 E_mail:info@targetmol.com Address:34 Washington Street,Wellesley Hills,MA 02481