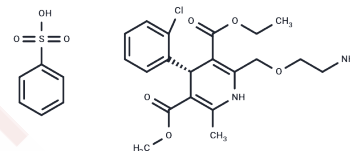


## Levamlodipine besylate

## Chemical Properties

CAS No. :	150566-71-5
Formula:	C <sub>26</sub> H <sub>31</sub> ClN <sub>2</sub> O <sub>8</sub> S
Molecular Weight:	567.05
Storage:	Powder: -20°C for 3 years   In solvent: -80°C for 1 year Actual storage temperature shall be subject to the COA.



## Biological Description

Description	Levamlodipine besylate ((S)-Amlodipine Besylate (103129-82-4(free base))) , also known as S-amlodipine, is a pharmacologically active enantiomer of amlodipine, an antihypertensive and anti-anginal medication. Levamlodipine besylate belongs to the dihydropyridine group of calcium channel blockers. The names S-amlodipine and levamlodipine may be used interchangeably as both substances are the same, however, with differing nomenclature. As a racemic mixture, amlodipine contains (R) and (S)-amlodipine isomers, but only (S)-amlodipine as the active moiety possesses therapeutic activity.
Targets(IC50)	Calcium Channel
In vitro	Amlodipine is a calcium channel blocker prescribed for the management of angina and hypertension. As a racemic mixture, amlodipine contains (R)- and (S)-amlodipine isomers, but only (S)-amlodipine as the active moiety possesses therapeutic activity

## Solubility Information

Solubility	DMSO: 60 mg/mL (105.81 mM),Sonication is recommended. (< 1 mg/ml refers to the product slightly soluble or insoluble)
In vivo Formulation	10% DMSO+40% PEG300+5% Tween 80+45% Saline: 2 mg/mL (3.53 mM),Sonication is recommended. <i>Please add the solvents sequentially, clarifying the solution as much as possible before adding the next one. Dissolve by heating and/or sonication if necessary. Working solution is recommended to be prepared and used immediately. The formulation provided above is for reference purposes only. In vivo formulations may vary and should be modified based on specific experimental conditions.</i>

### Preparing Stock Solutions

---

	<b>1mg</b>	<b>5mg</b>	<b>10mg</b>
1 mM	1.7635 mL	8.8176 mL	17.6351 mL
5 mM	0.3527 mL	1.7635 mL	3.527 mL
10 mM	0.1764 mL	0.8818 mL	1.7635 mL
50 mM	0.0353 mL	0.1764 mL	0.3527 mL

---

Please select the appropriate solvent to prepare the stock solution, according to the solubility of the product in different solvents. Please use it as soon as possible.

Note: The dilution table applies only to solid products. For liquid products, please calculate the stock solution based on the stated concentration and/or density.

### Reference

Liu F, et al. Tolerability and effectiveness of (S)-amlodipine compared with racemic amlodipine in hypertension: a systematic review and meta-analysis. *Curr Ther Res Clin Exp.* 2010 Feb;71(1):1-29.

**Inhibitor · Natural Compounds · Compound Libraries · Recombinant Proteins**

This product is for Research Use Only · Not for Human or Veterinary or Therapeutic Use

Tel: 781-999-4286    E\_mail: info@targetmol.com    Address: 34 Washington Street, Wellesley Hills, MA 02481