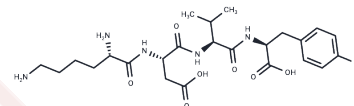


Tetrapeptide-2

Chemical Properties

CAS No. :	75957-56-1
Formula:	C ₂₄ H ₃₇ N ₅ O ₈
Molecular Weight:	523.58
Storage:	Keep away from moisture Powder: -20°C for 3 years In solvent: -80°C for 1 year <small>Actual storage temperature shall be subject to the COA.</small>



Biological Description

Description	Tetrapeptide-2 is an amino acid peptide.
-------------	--

Preparing Stock Solutions

	1mg	5mg	10mg
1 mM	1.9099 mL	9.5496 mL	19.0993 mL
5 mM	0.382 mL	1.9099 mL	3.8199 mL
10 mM	0.191 mL	0.955 mL	1.9099 mL
50 mM	0.0382 mL	0.191 mL	0.382 mL

Please select the appropriate solvent to prepare the stock solution, according to the solubility of the product in different solvents. Please use it as soon as possible.

Note: The dilution table applies only to solid products. For liquid products, please calculate the stock solution based on the stated concentration and/or density.

Reference

- Kaminsky W, Stenkamp RE, Skubatz H. Crystal and molecular structure of the analgesic tetrapeptide, L-Phe-L-Leu-L-Pro-L-Ser. *Biopolymers*. 2015 Mar;104(2):84-90. doi: 10.1002/bip.22606. PubMed PMID: 25581776.
- Liu BX, Guo Q, Peng GT, He XX, Chen XJ, Lei LF, Deng Y, Jun Su X, Zhang CX. New cyclic tetrapeptide from the coral-derived endophytic bacteria *Brevibacterium* sp. L-4 collected from the South China Sea. *Nat Prod Res*. 2016;30(1):7-12. doi: 10.1080/14786419.2015.1026340. Epub 2015 Jul 27. PubMed PMID: 26214049.
- Khavinson VKh, Sevost'ianova NN, Durnova AO, Lin'kova NS, Tarnovskaia SI, Dudkov AV, Kvetnaia TV. [Tetrapeptide stimulates functional activity of the pancreatic cells in aging]. *Adv Gerontol*. 2012;25(4):680-4. Russian. PubMed PMID: 23734516.
- Szegedi V, Juhász G, Rózsa E, Juhász-Vedres G, Datki Z, Fülöp L, Bozsó Z, Lakatos A, Laczkó I, Farkas T, Kis Z, Tóth G, Soós K, Zarándi M, Budai D, Toldi J, Penke B. Endomorphin-2, an endogenous tetrapeptide, protects against Abeta1-42 in vitro and in vivo. *FASEB J*. 2006 Jun;20(8):1191-3. Epub 2006 Apr 24. PubMed PMID: 16636106.

Inhibitor · Natural Compounds · Compound Libraries · Recombinant Proteins

This product is for Research Use Only · Not for Human or Veterinary or Therapeutic Use

Tel:781-999-4286 E_mail:info@targetmol.com Address:34 Washington Street,Wellesley Hills,MA 02481