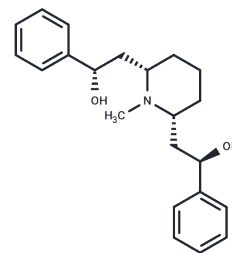


## Lobelanidine

## Chemical Properties

CAS No. :	552-72-7
Formula:	C <sub>22</sub> H <sub>29</sub> NO <sub>2</sub>
Molecular Weight:	339.47
Storage:	Powder: -20°C for 3 years   In solvent: -80°C for 1 year Actual storage temperature shall be subject to the COA.



## Biological Description

Description	Lobelanidine (8,10-Diphenyllobelidiol), which can be extracted from the above-ground parts of Lobelia chinensis Lour and Lobelia tupa, is an analogue of lobeline and shows a moderate affinity for nAChR.
Targets(IC50)	AChR

## Solubility Information

Solubility	DMSO: 4.8 mg/mL (14.14 mM), Sonication is recommended. (< 1 mg/ml refers to the product slightly soluble or insoluble)
------------	---

## Preparing Stock Solutions

	1mg	5mg	10mg
1 mM	2.9458 mL	14.7288 mL	29.4577 mL
5 mM	0.5892 mL	2.9458 mL	5.8915 mL
10 mM	0.2946 mL	1.4729 mL	2.9458 mL
50 mM	0.0589 mL	0.2946 mL	0.5892 mL

Please select the appropriate solvent to prepare the stock solution, according to the solubility of the product in different solvents. Please use it as soon as possible.

Note: The dilution table applies only to solid products. For liquid products, please calculate the stock solution based on the stated concentration and/or density.

### Reference

- Paz C, et al. (-)-Pentylsedinine, a New Alkaloid from the Leaves of *Lobelia tupa* with Agonist Activity at Nicotinic Acetylcholine Receptor. *Nat Prod Commun.* 2015;10(8):1355-1357.
- Chênevert R, et al. Synthesis of (-)-lobeline via enzymatic desymmetrization of lobelanidine. *Bioorg Med Chem.* 2009;17(5):1837-1839.
- Chen MW, et al. *Lobelia chinensis*: chemical constituents and anticancer activity perspective. *Chin J Nat Med.* 2014;12(2):103-107.
- Birman VB, et al. Enantioselective synthesis of lobeline via nonenzymatic desymmetrization. *Org Lett.* 2007;9(17):3237-3240.

**Inhibitor · Natural Compounds · Compound Libraries · Recombinant Proteins**

This product is for Research Use Only · Not for Human or Veterinary or Therapeutic Use

Tel:781-999-4286 E\_mail:info@targetmol.com Address:34 Washington Street,Wellesley Hills,MA 02481