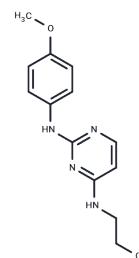


Cardiogenol C

Chemical Properties

CAS No. :	671225-39-1
Formula:	C13H16N4O2
Molecular Weight:	260.29
Storage:	Store at low temperature Powder: -20°C for 3 years In solvent: -80°C for 1 year <small>Actual storage temperature shall be subject to the COA.</small>



Biological Description

Description	Cardiogenol C is a cardiomyogenesis inducer in embryonic stem cells.
Targets(IC50)	Wnt/beta-catenin
Kinase Assay	The ATPase assay is performed in a 10 µL reaction mixture containing 20 mM Tris-HCl (pH 7.5), 1 mM DTT, 8 mM MgCl ₂ , 5 µM M13 circular ssDNA, 2.5 µM RecA from the specified bacterial species and increasing concentrations of suramin. The reaction is initiated by the addition of 2 mM [α- ³² P]ATP, incubated for 30 min at 37°C and stopped by the addition of 25 mM EDTA[2].

Solubility Information

Solubility	DMSO: 10 mM, Sonication is recommended. (< 1 mg/ml refers to the product slightly soluble or insoluble)
------------	--

Preparing Stock Solutions

	1mg	5mg	10mg
1 mM	3.8419 mL	19.2093 mL	38.4187 mL
5 mM	0.7684 mL	3.8419 mL	7.6837 mL
10 mM	0.3842 mL	1.9209 mL	3.8419 mL
50 mM	0.0768 mL	0.3842 mL	0.7684 mL

Please select the appropriate solvent to prepare the stock solution, according to the solubility of the product in different solvents. Please use it as soon as possible.

Note: The dilution table applies only to solid products. For liquid products, please calculate the stock solution based on the stated concentration and/or density.

Reference

Mike AK, et al. Cell Physiol Biochem. 2014;33(1):205-21.

Inhibitor · Natural Compounds · Compound Libraries · Recombinant Proteins

This product is for Research Use Only· Not for Human or Veterinary or Therapeutic Use

Tel:781-999-4286 E_mail:info@targetmol.com Address:34 Washington Street,Wellesley Hills,MA 02481