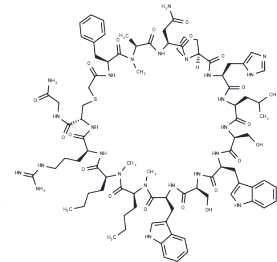


## BMSpep-57

## Chemical Properties

CAS No. :	1629655-80-6
Formula:	C89H126N24O19S
Molecular Weight:	1868.2
Storage:	Keep away from moisture Powder: -20°C for 3 years   In solvent: -80°C for 1 year <small>Actual storage temperature shall be subject to the COA.</small>



## Biological Description

Description	BMSpep-57, a potent macrocyclic peptide inhibitor, competitively disrupts the PD-1/PD-L1 interaction, demonstrating a significant inhibitory concentration (IC <sub>50</sub> ) of 7.68 nM. It exhibits binding affinity towards PD-L1 with dissociation constants (K <sub>d</sub> ) of 19 nM and 19.88 nM in MicroScale Thermophoresis (MST) and Surface Plasmon Resonance (SPR) assays, respectively. This compound enhances T cell functionality by promoting Interleukin-2 (IL-2) production within Peripheral Blood Mononuclear Cells (PBMCs).
Targets(IC <sub>50</sub> )	PD-1/PD-L1
In vitro	In an ELISA competition assay, BMSpep-57 inhibits PD-1/PD-L1 binding by up to 98.1% at 300 nM, with a concentration-dependent inhibition and an IC <sub>50</sub> of 7.68 nM [1]. BMSpep-57 induces high levels of IL-2 at 1 μM and 500 nM in SEB-stimulated peripheral blood mononuclear cells [1]. BMSpep-57 (0.2-10 μM; 24 hours) does not affect the viability of Jurkat, CHO, and HepG2 cells at the tested concentrations [1].

## Preparing Stock Solutions

	1mg	5mg	10mg
1 mM	0.5353 mL	2.6764 mL	5.3527 mL
5 mM	0.1071 mL	0.5353 mL	1.0705 mL
10 mM	0.0535 mL	0.2676 mL	0.5353 mL
50 mM	0.0107 mL	0.0535 mL	0.1071 mL

Please select the appropriate solvent to prepare the stock solution, according to the solubility of the product in different solvents. Please use it as soon as possible.

Note: The dilution table applies only to solid products. For liquid products, please calculate the stock solution based on the stated concentration and/or density.

Reference

Aravindhnan Ganesan, et al. Comprehensive in vitro characterization of PD-L1 small molecule inhibitors. Sci Rep . 2019 Aug 27;9(1):12392.

**Inhibitor · Natural Compounds · Compound Libraries · Recombinant Proteins**

This product is for Research Use Only · Not for Human or Veterinary or Therapeutic Use

Tel:781-999-4286 E\_mail:info@targetmol.com Address:34 Washington Street,Wellesley Hills,MA 02481