

Clinopodiside A

Chemical Properties

CAS No. : 142809-89-0

Formula: C₆₆H₁₁₄O₁₉

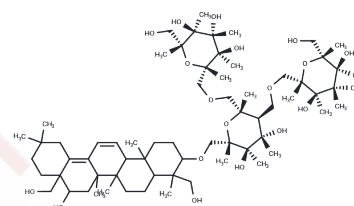
Molecular Weight: 1211.62

Storage:

Keep away from moisture, Keep away from direct sunlight

Powder: -20°C for 3 years | In solvent: -80°C for 1 year

Actual storage temperature shall be subject to the COA.



Biological Description

Description	Clinopodiside A, a triterpenoid saponin isolated from <i>Clinopodium polycephalum</i> , has antitumor activity and induces cytotoxicity through BLK and RasGRP2 signaling-mediated autophagy in T24 bladder cancer cells.
Targets(IC50)	Fatty Acid Synthase, DNA/RNA Synthesis
In vitro	Clinopodiside A is a triterpenoid saponin derived from <i>Clinopodium polycephalum</i> and possesses activities such as antioxidation, anti-inflammation, and anticancer effects[1].

Solubility Information

Solubility	DMSO: 100 mg/mL (82.53 mM), Sonication is recommended. H ₂ O: < 1 mg/mL (insoluble or slightly soluble) (< 1 mg/ml refers to the product slightly soluble or insoluble)
------------	--

Preparing Stock Solutions

	1mg	5mg	10mg
1 mM	0.8253 mL	4.1267 mL	8.2534 mL
5 mM	0.1651 mL	0.8253 mL	1.6507 mL
10 mM	0.0825 mL	0.4127 mL	0.8253 mL
50 mM	0.0165 mL	0.0825 mL	0.1651 mL

Please select the appropriate solvent to prepare the stock solution, according to the solubility of the product in different solvents. Please use it as soon as possible.

Note: The dilution table applies only to solid products. For liquid products, please calculate the stock solution based on the stated concentration and/or density.

Reference

Xue SR, et al. Triterpenoid saponins from *Clinopodium polycephalum*. *Phytochemistry*. 1992 Mar;31(3):1049-50.
Liu Z, et al. Triterpenoid saponins from *Clinopodium chinensis*. *J Nat Prod*. 1995 Feb;58(2):184-8.

Inhibitor · Natural Compounds · Compound Libraries · Recombinant Proteins

This product is for Research Use Only · Not for Human or Veterinary or Therapeutic Use

Tel: 781-999-4286 E_mail: info@targetmol.com Address: 34 Washington Street, Wellesley Hills, MA 02481