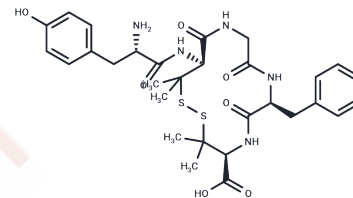


DPDPE

Chemical Properties

CAS No. :	88373-73-3
Formula:	C ₃₀ H ₃₉ N ₅ O ₇ S ₂
Molecular Weight:	645.79
Storage:	Keep away from moisture Powder: -20°C for 3 years In solvent: -80°C for 1 year <small>Actual storage temperature shall be subject to the COA.</small>



Biological Description

Description	DPDPE is selective δ -opioid receptor agonist peptide. Inhibits electrically stimulated contraction of mouse vas deferens in vitro (EC ₅₀ = 5.2 nM), and is antinociceptive in vivo.
Targets(IC ₅₀)	Opioid Receptor

Solubility Information

Solubility	H ₂ O: 1 mg/mL (1.55 mM), Sonication is recommended. (< 1 mg/ml refers to the product slightly soluble or insoluble)
------------	---

Preparing Stock Solutions

	1mg	5mg	10mg
1 mM	1.5485 mL	7.7425 mL	15.4849 mL
5 mM	0.3097 mL	1.5485 mL	3.097 mL
10 mM	0.1548 mL	0.7742 mL	1.5485 mL
50 mM	0.031 mL	0.1548 mL	0.3097 mL

Please select the appropriate solvent to prepare the stock solution, according to the solubility of the product in different solvents. Please use it as soon as possible.

Note: The dilution table applies only to solid products. For liquid products, please calculate the stock solution based on the stated concentration and/or density.

Reference

Chandrakumar et al (1992) Analogs of the δ opioid receptor selective cyclic peptide [2-D-penicillamine,5-D-penicillamine]-enkephalin: 2',6'-dimethyltyrosine and Gly3-Phe4 amide bond isostere substitutions. J.Med.Chem. 35 2928 PMID:

Clark et al (1986) [D-Pen2,D-Pen5]enkephalin (DPDPE): a δ -selective enkephalin with low affinity for μ 1 opiate binding sites. Eur.J.Pharmacol. 128 303 PMID:

Fraser et al (2000) Supraspinal antinociceptive response to [D-Pen2,5]-enkephalin (DPDPE) is pharmacologically distinct from that to other δ -agonists in the rat. J.Pharmacol.Exp.Ther. 295 1135 PMID:

Inhibitor · Natural Compounds · Compound Libraries · Recombinant Proteins

This product is for Research Use Only · Not for Human or Veterinary or Therapeutic Use

Tel:781-999-4286 E_mail:info@targetmol.com Address:34 Washington Street,Wellesley Hills,MA 02481