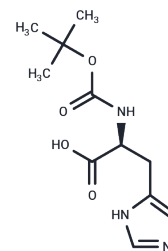


Boc-His-OH

Chemical Properties

CAS No. :	17791-52-5
Formula:	C ₁₁ H ₁₇ N ₃ O ₄
Molecular Weight:	255.27
Storage:	Keep away from moisture Powder: -20°C for 3 years In solvent: -80°C for 1 year <small>Actual storage temperature shall be subject to the COA.</small>



Biological Description

Description	Boc-His-OH is a protected amino acid derivative widely used in peptide synthesis and biochemical studies. N-Boc-L-Histidine is used as an intermediate in peptide synthesis for the construction of polypeptide chains with good chemical stability and solubility.
Targets(IC50)	Others, Amino Acids and Derivatives

Solubility Information

Solubility	DMSO: 20 mg/mL (78.35 mM), Sonication is recommended. (< 1 mg/ml refers to the product slightly soluble or insoluble)
In vivo Formulation	10% DMSO+40% PEG300+5% Tween 80+45% Saline: 2 mg/mL (7.83 mM), Sonication is recommended. <i>Please add the solvents sequentially, clarifying the solution as much as possible before adding the next one. Dissolve by heating and/or sonication if necessary. Working solution is recommended to be prepared and used immediately. The formulation provided above is for reference purposes only. In vivo formulations may vary and should be modified based on specific experimental conditions.</i>

Preparing Stock Solutions

	1mg	5mg	10mg
1 mM	3.9174 mL	19.5871 mL	39.1742 mL
5 mM	0.7835 mL	3.9174 mL	7.8348 mL
10 mM	0.3917 mL	1.9587 mL	3.9174 mL
50 mM	0.0783 mL	0.3917 mL	0.7835 mL

Please select the appropriate solvent to prepare the stock solution, according to the solubility of the product in different solvents. Please use it as soon as possible.

Note: The dilution table applies only to solid products. For liquid products, please calculate the stock solution based on the stated concentration and/or density.

Reference

Luckose F, et al. Effects of amino acid derivatives on physical, mental, and physiological activities. Crit Rev Food Sci Nutr. 2015;55(13):1793-1144.

Inhibitor · Natural Compounds · Compound Libraries · Recombinant Proteins

This product is for Research Use Only · Not for Human or Veterinary or Therapeutic Use

Tel:781-999-4286 E_mail:info@targetmol.com Address:34 Washington Street,Wellesley Hills,MA 02481