

BDC2.5 mimotope 1040-31 acetate

Chemical Properties

CAS No. :

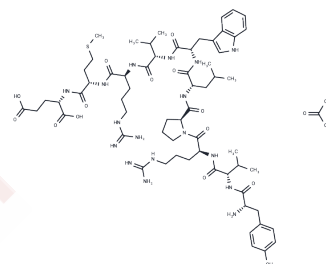
Formula: C₆₅H₁₀₁N₁₇O₁₆S

Molecular Weight: 1408.69

Keep away from moisture

Storage: Powder: -20°C for 3 years | In solvent: -80°C for 1 year

Actual storage temperature shall be subject to the COA.



Biological Description

Description	BDC2.5 mimotope 1040-31 acetate is an effectively agonistic peptide (mimotope) for diabetogenic T cell clone BDC2.5. It can stimulate BDC2.5 cells with cells showing good response to this mimotope. 1040-31 peptide is specific for BDC2.5 TCR Tg+ (transgenic) T cells. This peptide is also known as p31.
Targets(IC50)	Others

Solubility Information

Solubility	DMSO: 10 mM, Sonication is recommended. (< 1 mg/ml refers to the product slightly soluble or insoluble)
------------	--

Preparing Stock Solutions

	1mg	5mg	10mg
1 mM	0.7099 mL	3.5494 mL	7.0988 mL
5 mM	0.142 mL	0.7099 mL	1.4198 mL
10 mM	0.071 mL	0.3549 mL	0.7099 mL
50 mM	0.0142 mL	0.071 mL	0.142 mL

Please select the appropriate solvent to prepare the stock solution, according to the solubility of the product in different solvents. Please use it as soon as possible.

Note: The dilution table applies only to solid products. For liquid products, please calculate the stock solution based on the stated concentration and/or density.

Reference

Dai YD, et al. A peptide of glutamic acid decarboxylase 65 can recruit and expand a diabetogenic T cell clone, BDC2.5, in the pancreas. J Immunol. 2005 Sep 15;175(6):3621-7.

Inhibitor · Natural Compounds · Compound Libraries · Recombinant Proteins

This product is for Research Use Only · Not for Human or Veterinary or Therapeutic Use

Tel:781-999-4286 E_mail:info@targetmol.com Address:34 Washington Street,Wellesley Hills,MA 02481