

ALB-127158

Chemical Properties

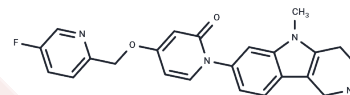
CAS No. : 1173154-32-9

Formula: C₂₃H₂₁FN₄O₂

Molecular Weight: 404.44

Storage: Powder: -20°C for 3 years | In solvent: -80°C for 1 year

Actual storage temperature shall be subject to the COA.



Biological Description

Description	ALB-127158(a) is a potent and selective melanin-concentrating hormone 1 (MCH 1) receptor antagonist that may potentially treat inflammatory bowel disease (IBD).
Targets(IC50)	Others, Melanin-concentrating Hormone Receptor (MCHR), GPCR
In vitro	ALB-127158(a) exhibits a high affinity for the MCH 1 receptor (7 nM), demonstrating significant selectivity against various G-protein coupled receptors (GPCRs), ion channels, and transporters, notably excluding the MCH 2 receptor. In vitro functional assays have validated ALB-127158(a) as a potent and selective antagonist of the MCH 1 receptor [1].
In vivo	In a diet-induced obesity (DIO) mouse model and a high-fat diet (HFD) rat model, ALB-127158(a) effectively decreases body weight and food intake. At doses ranging from 5-15 mg/kg bid for mice and as low as 1.25 mg/kg po for rats, it significantly reduces weight, primarily by decreasing fat content, with weight loss exceeding 6% for doses above 1.25 mg/kg po in rats, and peaking at about 10% weight loss at 10 mg/kg. ALB-127158(a) is quickly absorbed after oral administration, reaching maximum plasma concentration between 1 and 3 hours in both lean and overweight/obese subjects; however, lower doses exhibit a trend towards slower absorption. The compound has an average half-life of 18 to 21 hours after a single dose, which extends to approximately 26 hours with multiple doses, achieving steady-state levels in 6 to 8 days of dosing in overweight/obese subjects.

Preparing Stock Solutions

	1mg	5mg	10mg
1 mM	2.4726 mL	12.3628 mL	24.7255 mL
5 mM	0.4945 mL	2.4726 mL	4.9451 mL
10 mM	0.2473 mL	1.2363 mL	2.4726 mL
50 mM	0.0495 mL	0.2473 mL	0.4945 mL

Please select the appropriate solvent to prepare the stock solution, according to the solubility of the product in different solvents. Please use it as soon as possible.

Note: The dilution table applies only to solid products. For liquid products, please calculate the stock solution based on the stated concentration and/or density.

Inhibitor · Natural Compounds · Compound Libraries · Recombinant Proteins

This product is for Research Use Only · Not for Human or Veterinary or Therapeutic Use

Tel:781-999-4286 E_mail:info@targetmol.com Address:34 Washington Street,Wellesley Hills,MA 02481