

Tuna AI acetate

Chemical Properties

CAS No. :

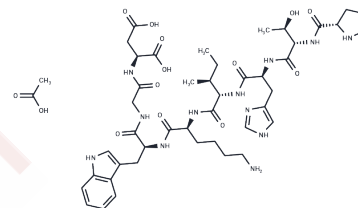
Formula: C46H68N12O14

Molecular Weight: 1013.1

Keep away from moisture

Storage: Powder: -20°C for 3 years | In solvent: -80°C for 1 year

Actual storage temperature shall be subject to the COA.



Biological Description

Description	Tuna AI acetate is an inhibitor of angiotensin-converting enzyme (ACE) in non-competitive manner derived from tuna muscle.
Targets(IC50)	Angiotensin-converting Enzyme (ACE)
In vitro	Tuna AI acetate inhibited rabbit lung ACE non-competitively with Ki values of 1.7 and 5.7 microM with substrates, hippuryl-L-histidyl-L-leucine and angiotensin I, respectively. Tuna AI acetate (5.3 microM) also doubled the effect of bradykinin in the contraction of isolated guinea pig ileum[1].

Solubility Information

Solubility	DMSO: 22.5 mg/mL (22.21 mM), Sonication is recommended. (< 1 mg/ml refers to the product slightly soluble or insoluble)
------------	--

Preparing Stock Solutions

	1mg	5mg	10mg
1 mM	0.9871 mL	4.9353 mL	9.8707 mL
5 mM	0.1974 mL	0.9871 mL	1.9741 mL
10 mM	0.0987 mL	0.4935 mL	0.9871 mL
50 mM	0.0197 mL	0.0987 mL	0.1974 mL

Please select the appropriate solvent to prepare the stock solution, according to the solubility of the product in different solvents. Please use it as soon as possible.

Note: The dilution table applies only to solid products. For liquid products, please calculate the stock solution based on the stated concentration and/or density.

Reference

Kohama Y, et al. Biological properties of angiotensin-converting enzyme inhibitor derived from tuna muscle. J Pharmacobiodyn. 1989 Sep;12(9):566-71.

Inhibitor · Natural Compounds · Compound Libraries · Recombinant Proteins

This product is for Research Use Only · Not for Human or Veterinary or Therapeutic Use

Tel:781-999-4286 E_mail:info@targetmol.com Address:34 Washington Street,Wellesley Hills,MA 02481