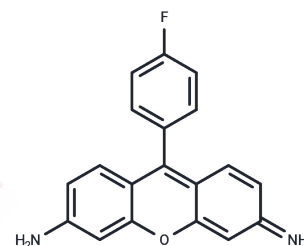


KP-1

## Chemical Properties

CAS No. : 936487-99-9  
 Formula: C<sub>19</sub>H<sub>13</sub>FN<sub>2</sub>O  
 Molecular Weight: 304.32  
 Storage: Powder: -20°C for 3 years | In solvent: -80°C for 1 year  
 Actual storage temperature shall be subject to the COA.



## Biological Description

Description	KP-1 is a selective fluorescent probe for labeling human pluripotent stem cells.
Targets(IC50)	Others

## Preparing Stock Solutions

	1mg	5mg	10mg
1 mM	3.286 mL	16.4301 mL	32.8601 mL
5 mM	0.6572 mL	3.286 mL	6.572 mL
10 mM	0.3286 mL	1.643 mL	3.286 mL
50 mM	0.0657 mL	0.3286 mL	0.6572 mL

Please select the appropriate solvent to prepare the stock solution, according to the solubility of the product in different solvents. Please use it as soon as possible.

Note: The dilution table applies only to solid products. For liquid products, please calculate the stock solution based on the stated concentration and/or density.

## Reference

Ciccia A, McDonald N, West SC. Structural and functional relationships of the XPF/MUS81 family of proteins. Annu Rev Biochem. 2008;77:259-87. doi: 10.1146/annurev.biochem.77.070306.102408. Review. PubMed PMID: 18518821.

Inhibitor · Natural Compounds · Compound Libraries · Recombinant Proteins

This product is for Research Use Only · Not for Human or Veterinary or Therapeutic Use

Tel:781-999-4286 E\_mail:info@targetmol.com Address:34 Washington Street,Wellesley Hills,MA 02481