

Levoleucovorin Calcium

Chemical Properties

CAS No. : 80433-71-2

Formula: C₂₀H₂₁N₇O₇·Ca

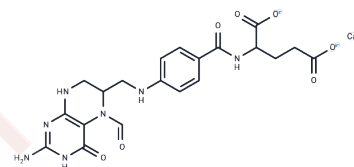
Molecular Weight: 511.5

Storage:

Keep away from direct sunlight, Store at low temperature, Store under nitrogen, The compound is unstable in solution. Please use soon

Powder: -20°C for 3 years

Actual storage temperature shall be subject to the COA.



Biological Description

Description	Levoleucovorin Calcium (CL307782), a calcium salt of the folinic acid, is used in cancer chemotherapy as an adjuvant.
Targets(IC50)	Antifolate
Kinase Assay	Chk1 Assay: For the Chk1 assay, the kinase domain is expressed in Sf9 insect cells, and a biotinylated cdc25c peptide containing the consensus Chk1/Chk2 phosphorylation site (*) (biotin-[AHX]SGSGS*GLYRSPMP-ENLNRPR[CONH2]) is used as the substrate. A dilution series of CHIR-124 is mixed with a kinase reaction buffer containing a final concentration of 30 mM Tris-HCl (pH 7.5), 10 mM MgCl ₂ , 2 mM DTT, 4 mM EDTA, 25 mM β-glycerophosphate, 5 mM MnCl ₂ , 0.01% bovine serum albumin, 1.35 nM CHK1 kinase domain, 0.5 μM peptide substrate, and 1 AM unlabeled ATP, plus 5 nM ³³ Pγ-labeled ATP (specific activity = 2,000 Ci/mmol). Reactions and detection of the phosphate transfer are carried out by a radioactive method. Reactions are incubated at room temperature for 1 to 4 hours and the phosphorylated peptide captured on streptavidin-coated microtiter plates containing stop reaction buffer (25 mM EDTA [ethylenediaminetetraacetic acid], 50 mM HEPES, pH 7.5). Phosphorylated peptide is measured with the DELFIA TRF system using a Europium-labeled anti-phosphotyrosine antibody PT66. The concentration of CHIR-124 for IC ₅₀ is calculated using nonlinear regression with XL-Fit data analysis software.

Solubility Information

Solubility	DMSO: Insoluble, The compound is unstable in solution, please use soon. H ₂ O: < 1 mg/mL (insoluble), Sonication is recommended. (< 1 mg/ml refers to the product slightly soluble or insoluble)
------------	---

Preparing Stock Solutions

	1mg	5mg	10mg
1 mM	1.955 mL	9.7752 mL	19.5503 mL
5 mM	0.391 mL	1.955 mL	3.9101 mL
10 mM	0.1955 mL	0.9775 mL	1.955 mL
50 mM	0.0391 mL	0.1955 mL	0.391 mL

Please select the appropriate solvent to prepare the stock solution, according to the solubility of the product in different solvents. Please use it as soon as possible.

Note: The dilution table applies only to solid products. For liquid products, please calculate the stock solution based on the stated concentration and/or density.

Reference

Lebitasy M, Hecq JD, Athanassopoulos A, Vanbeckbergen D, Jamart J, Galanti L.J Clin Pharm Ther. 2009 Aug;34(4):423-8.

Honma H.Gan To Kagaku Ryoho. 2006 Nov;33(11):1633-6. Japanese.

Inhibitor · Natural Compounds · Compound Libraries · Recombinant Proteins

This product is for Research Use Only· Not for Human or Veterinary or Therapeutic Use

Tel:781-999-4286 E_mail:info@targetmol.com Address:34 Washington Street,Wellesley Hills,MA 02481