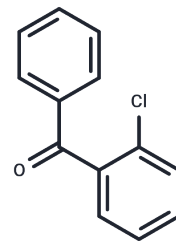


## (2-Chlorophenyl)phenyl-methanone

## Chemical Properties

CAS No. :	5162-03-8
Formula:	C <sub>13</sub> H <sub>9</sub> ClO
Molecular Weight:	216.66
Storage:	Powder: -20°C for 3 years   In solvent: -80°C for 1 year Actual storage temperature shall be subject to the COA.



## Biological Description

Description	(2-Chlorophenyl)phenyl-methanone is used as pharmaceutical intermediate.
Targets(IC50)	Others

## Solubility Information

Solubility	DMSO: 50 mg/mL (230.78 mM),Sonication is recommended. (< 1 mg/ml refers to the product slightly soluble or insoluble)
------------	--

## Preparing Stock Solutions

	1mg	5mg	10mg
1 mM	4.6155 mL	23.0776 mL	46.1553 mL
5 mM	0.9231 mL	4.6155 mL	9.2311 mL
10 mM	0.4616 mL	2.3078 mL	4.6155 mL
50 mM	0.0923 mL	0.4616 mL	0.9231 mL

Please select the appropriate solvent to prepare the stock solution, according to the solubility of the product in different solvents. Please use it as soon as possible.

Note: The dilution table applies only to solid products. For liquid products, please calculate the stock solution based on the stated concentration and/or density.

## Reference

Sancho MI, et al. Carbohydr Res. 2011 Sep 27;346(13):1978-84.

**Inhibitor · Natural Compounds · Compound Libraries · Recombinant Proteins**

This product is for Research Use Only · Not for Human or Veterinary or Therapeutic Use

Tel:781-999-4286 E\_mail:info@targetmol.com Address:34 Washington Street,Wellesley Hills,MA 02481