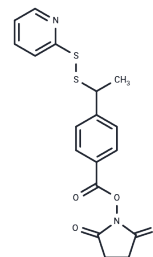


SMPT

Chemical Properties

CAS No. :	112241-19-7
Formula:	C ₁₈ H ₁₆ N ₂ O ₄ S ₂
Molecular Weight:	388.46
Storage:	Keep away from direct sunlight Powder: -20°C for 3 years In solvent: -80°C for 1 year <small>Actual storage temperature shall be subject to the COA.</small>



Biological Description

Description	SMPT, a non-cleavable ADC linker, is utilized in the production of antibody-drug conjugates (ADCs)[1].
Targets(IC50)	ADC Linker,PROTAC Linker
In vitro	Antibody-drug conjugates (ADCs) consist of an antibody linked to an ADC cytotoxin via an ADC linker[1].

Preparing Stock Solutions

	1mg	5mg	10mg
1 mM	2.5743 mL	12.8713 mL	25.7427 mL
5 mM	0.5149 mL	2.5743 mL	5.1485 mL
10 mM	0.2574 mL	1.2871 mL	2.5743 mL
50 mM	0.0515 mL	0.2574 mL	0.5149 mL

Please select the appropriate solvent to prepare the stock solution, according to the solubility of the product in different solvents. Please use it as soon as possible.

Note: The dilution table applies only to solid products. For liquid products, please calculate the stock solution based on the stated concentration and/or density.

Reference

Beck A, et al. Strategies and challenges for the next generation of antibody-drug conjugates. Nat Rev Drug Discov. 2017 May;16(5):315-337.

Inhibitor · Natural Compounds · Compound Libraries · Recombinant Proteins

This product is for Research Use Only · Not for Human or Veterinary or Therapeutic Use

Tel:781-999-4286 E_mail:info@targetmol.com Address:34 Washington Street,Wellesley Hills,MA 02481