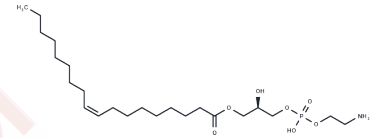


PE(18:1(9Z)/0:0)

Chemical Properties

CAS No. : 89576-29-4
 Formula: C23H46NO7P
 Molecular Weight: 479.59
 Storage: Store at low temperature
 Powder: -20°C for 3 years | In solvent: -80°C for 1 year
 Actual storage temperature shall be subject to the COA.



Biological Description

Description	PE(18:1(9Z)/0:0) is a naturally-occurring lysophospholipid and an analog of plasmalogen lysophosphatidylethanolamine. PE(18:1(9Z)/0:0) induces transient increases in intracellular calcium in PC12 rat neuronal cells in a concentration-dependent manner. PE(18:1(9Z)/0:0) increases the production of IL-4 and IL-2, but not IFN- γ . In mouse serum, PE(18:1(9Z)/0:0) (1 μ g/animal) induces the T helper 2 response. PE(18:1(9Z)/0:0) levels increase in interscapular brown adipose tissue in mice following three-day cold exposure.
Targets(IC50)	Endogenous Metabolite, Drug Metabolite

Solubility Information

Solubility	Chloroform: 3 mg/mL (6.26 mM), Sonication is recommended. Ethanol: 2.3 mg/mL (4.8 mM) DMSO: < 0.55 mg/mL (insoluble or slightly soluble) (< 1 mg/ml refers to the product slightly soluble or insoluble)
------------	---

Preparing Stock Solutions

	1mg	5mg	10mg
1 mM	2.0851 mL	10.4256 mL	20.8511 mL
5 mM	0.417 mL	2.0851 mL	4.1702 mL
10 mM	0.2085 mL	1.0426 mL	2.0851 mL
50 mM	0.0417 mL	0.2085 mL	0.417 mL

Please select the appropriate solvent to prepare the stock solution, according to the solubility of the product in different solvents. Please use it as soon as possible.

Note: The dilution table applies only to solid products. For liquid products, please calculate the stock solution based on the stated concentration and/or density.

Reference

Liu B, Guo, et al. HSerum metabolomics analysis of deficiency pattern and excess pattern in patients with rheumatoid arthritis. Chin Med. 2022 Jun 15;17(1):71.

Inhibitor · Natural Compounds · Compound Libraries · Recombinant Proteins

This product is for Research Use Only · Not for Human or Veterinary or Therapeutic Use

Tel:781-999-4286 E_mail:info@targetmol.com Address:34 Washington Street,Wellesley Hills,MA 02481