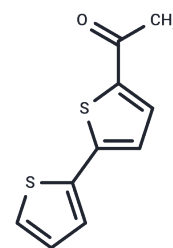


1-[2,2'-Bithiophen]-5-ylethanone

Chemical Properties

CAS No. :	3515-18-2
Formula:	C10H8OS2
Molecular Weight:	208.3
Storage:	Powder: -20°C for 3 years In solvent: -80°C for 1 year Actual storage temperature shall be subject to the COA.



Biological Description

Description	1-[2,2'-Bithiophen]-5-ylethanone, with CAS No. 3515-18-2, is a fragment molecule that serves as an important scaffold for molecular linking, expansion, and modification. 1-[2,2'-Bithiophen]-5-ylethanone provides a structural basis and research tool for the design and screening of novel drug candidates, and is commonly used in drug discovery, drug synthesis, and related research.
-------------	---

Preparing Stock Solutions

	1mg	5mg	10mg
1 mM	4.8008 mL	24.0038 mL	48.0077 mL
5 mM	0.9602 mL	4.8008 mL	9.6015 mL
10 mM	0.4801 mL	2.4004 mL	4.8008 mL
50 mM	0.096 mL	0.4801 mL	0.9602 mL

Please select the appropriate solvent to prepare the stock solution, according to the solubility of the product in different solvents. Please use it as soon as possible.

Note: The dilution table applies only to solid products. For liquid products, please calculate the stock solution based on the stated concentration and/or density.

Inhibitor · Natural Compounds · Compound Libraries · Recombinant Proteins

This product is for Research Use Only · Not for Human or Veterinary or Therapeutic Use

Tel: 781-999-4286 E_mail: info@targetmol.com Address: 34 Washington Street, Wellesley Hills, MA 02481