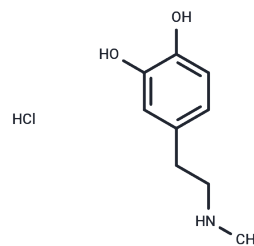


## N-Methyldopamine hydrochloride

## Chemical Properties

CAS No. :	62-32-8
Formula:	C <sub>9</sub> H <sub>14</sub> ClNO <sub>2</sub>
Molecular Weight:	203.67
Storage:	Keep away from moisture, Store at low temperature Powder: -20°C for 3 years   In solvent: -80°C for 1 year <small>Actual storage temperature shall be subject to the COA.</small>



## Biological Description

Description	N-Methyldopamine hydrochloride (Ephedrine hydrochloride) is a precursor of adrenaline in the adrenal medulla, an $\alpha$ - and $\beta$ -agonist with indirect sympathomimetic activity of dopamine.
Targets(IC50)	Adrenergic Receptor, Dopamine Receptor
In vitro	N-Methyldopamine hydrochloride has highly improved surface coating properties and exhibits an accelerated coating rate. N-Methyldopamine hydrochloride coating makes solid surface cell adhesion possible, and post-functionalization of the coating is also possible [1].

## Solubility Information

Solubility	H <sub>2</sub> O: 80 mg/mL (392.79 mM), Sonication is recommended. (< 1 mg/ml refers to the product slightly soluble or insoluble)
------------	---

## Preparing Stock Solutions

	1mg	5mg	10mg
1 mM	4.9099 mL	24.5495 mL	49.099 mL
5 mM	0.982 mL	4.9099 mL	9.8198 mL
10 mM	0.491 mL	2.455 mL	4.9099 mL
50 mM	0.0982 mL	0.491 mL	0.982 mL

Please select the appropriate solvent to prepare the stock solution, according to the solubility of the product in different solvents. Please use it as soon as possible.

Note: The dilution table applies only to solid products. For liquid products, please calculate the stock solution based on the stated concentration and/or density.

Reference

Laduron P, et al. N-Methyldopamine (epinine), a precursor of adrenaline in the adrenal medulla. Arch Int Pharmacodyn Ther. 1972 Apr;196:Suppl 196:304-.

Rajfer SI, et al. Effects of long-term therapy with oral ibopamine on resting hemodynamics and exercise capacity in patients with heart failure: relationship to the generation of N-methyldopamine and to plasma norepinephrine levels. Circulation. 1986 Apr;73(4):740-8.

**Inhibitor · Natural Compounds · Compound Libraries · Recombinant Proteins**

This product is for Research Use Only· Not for Human or Veterinary or Therapeutic Use

Tel:781-999-4286 E\_mail:info@targetmol.com Address:34 Washington Street,Wellesley Hills,MA 02481