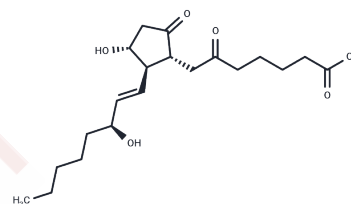


## 6-keto Prostaglandin E1

## Chemical Properties

|                   |   |
|-------------------|---|
| CAS No. :         | 67786-53-2  |
| Formula:          | C <sub>20</sub> H <sub>32</sub> O <sub>6</sub>  |
| Molecular Weight: | 368.46  |
| Storage:          | Powder: -20°C for 3 years   In solvent: -80°C for 1 year<br>Actual storage temperature shall be subject to the COA. |



## Biological Description

|               |   |
|---------------|---|
| Description   | 6-keto Prostaglandin E1 is a bioactive derivative of PGE1 that plays a role in antiplatelet aggregation and depolymerization. |
| Targets(IC50) | Others  |

## Solubility Information

|            |   |
|------------|---|
| Solubility | PBS (pH 7.2): >1.6 mg/mL (from PGE1), Sonication is recommended.<br>DMF: >100 mg/mL (from PGE1), Sonication is recommended.<br>DMSO: >50 mg/mL (from PGE1), Sonication is recommended.<br>Ethanol: >50 mg/mL (from PGE1), Sonication is recommended.<br>(< 1 mg/ml refers to the product slightly soluble or insoluble) |
|------------|---|

## Preparing Stock Solutions

|       | 1mg       | 5mg       | 10mg      |
|-------|-----------|-----------|-----------|
| 1 mM  | 2.714 mL  | 13.570 mL | 27.140 mL |
| 5 mM  | 0.5428 mL | 2.714 mL  | 5.428 mL  |
| 10 mM | 0.2714 mL | 1.357 mL  | 2.714 mL  |
| 50 mM | 0.0543 mL | 0.2714 mL | 0.5428 mL |

Please select the appropriate solvent to prepare the stock solution, according to the solubility of the product in different solvents. Please use it as soon as possible.

Note: The dilution table applies only to solid products. For liquid products, please calculate the stock solution based on the stated concentration and/or density.

**Inhibitor · Natural Compounds · Compound Libraries · Recombinant Proteins**

This product is for Research Use Only · Not for Human or Veterinary or Therapeutic Use

Tel: 781-999-4286 E\_mail: info@targetmol.com Address: 34 Washington Street, Wellesley Hills, MA 02481