

Pomalidomide-PEG2-Tos

Chemical Properties

CAS No. :

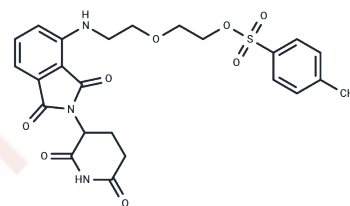
Formula: C₂₄H₂₅N₃O₈S

Molecular Weight: 515.54

Keep away from direct sunlight

Storage: Powder: -20°C for 3 years | In solvent: -80°C for 1 year

Actual storage temperature shall be subject to the COA.



Biological Description

Description	Pomalidomide-PEG2-Tos is a compound that consists of an E3 ligase ligand-linker conjugate. It is composed of a cereblon ligand conjugated to a two-unit PEG linker[1].
Targets(IC50)	Others,E3 Ligase Ligand-Linker Conjugates,PROTAC Linker

Preparing Stock Solutions

	1mg	5mg	10mg
1 mM	1.9397 mL	9.6986 mL	19.3971 mL
5 mM	0.3879 mL	1.9397 mL	3.8794 mL
10 mM	0.194 mL	0.9699 mL	1.9397 mL
50 mM	0.0388 mL	0.194 mL	0.3879 mL

Please select the appropriate solvent to prepare the stock solution, according to the solubility of the product in different solvents. Please use it as soon as possible.

Note: The dilution table applies only to solid products. For liquid products, please calculate the stock solution based on the stated concentration and/or density.

Reference

Su S, et al. Potent and Preferential Degradation of CDK6 via Proteolysis Targeting Chimera Degradable. J Med Chem. 2019 Aug 22;62(16):7575-7582.

Inhibitor · Natural Compounds · Compound Libraries · Recombinant Proteins

This product is for Research Use Only · Not for Human or Veterinary or Therapeutic Use

Tel:781-999-4286 E_mail:info@targetmol.com Address:34 Washington Street,Wellesley Hills,MA 02481