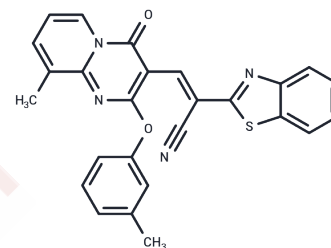


CCG-63802

Chemical Properties

CAS No. : 620112-78-9
 Formula: C₂₆H₁₈N₄O₂S
 Molecular Weight: 450.51
 Storage: Powder: -20°C for 3 years | In solvent: -80°C for 1 year
 Actual storage temperature shall be subject to the COA.



Biological Description

Description	CCG-63802 is a reversible small-molecule inhibitor of regulator of G protein signaling (RGS) proteins. CCG-63802 inhibits the interaction between RGS4 and Galpha with an IC ₅₀ value of 1.4 μM.
Targets(IC ₅₀)	GTPase
In vitro	CCG-63802 inhibits GTPase accelerating protein activity of RGS4 and blocks its interaction with Gαo.

Solubility Information

Solubility	DMSO: 1.67 mg/mL (3.71 mM), Sonication and heating are recommended. (< 1 mg/ml refers to the product slightly soluble or insoluble)
------------	---

Preparing Stock Solutions

	1mg	5mg	10mg
1 mM	2.2197 mL	11.0985 mL	22.1971 mL
5 mM	0.4439 mL	2.2197 mL	4.4394 mL
10 mM	0.222 mL	1.1099 mL	2.2197 mL
50 mM	0.0444 mL	0.222 mL	0.4439 mL

Please select the appropriate solvent to prepare the stock solution, according to the solubility of the product in different solvents. Please use it as soon as possible.

Note: The dilution table applies only to solid products. For liquid products, please calculate the stock solution based on the stated concentration and/or density.

Reference

Blazer LL, et al. Reversible, allosteric small-molecule inhibitors of regulator of G protein signaling proteins. Mol Pharmacol. 2010 Sep;78(3):524-33.

Meng X, et al. PPAR γ Agonist PGZ Attenuates OVA-Induced Airway Inflammation and Airway Remodeling via RGS4 Signaling in Mouse Model. Inflammation. 2018 Jul 19.

Bosier B, et al. Inhibition of the regulator of G protein signalling RGS4 in the spinal cord decreases neuropathic hyperalgesia and restores cannabinoid CB1 receptor signalling. Br J Pharmacol. 2015 Nov;172(22):5333-46.

Inhibitor · Natural Compounds · Compound Libraries · Recombinant Proteins

This product is for Research Use Only · Not for Human or Veterinary or Therapeutic Use

Tel:781-999-4286 E_mail:info@targetmol.com Address:34 Washington Street,Wellesley Hills,MA 02481