

## Z-LLNle-CHO

## Chemical Properties

CAS No. : 133407-83-7

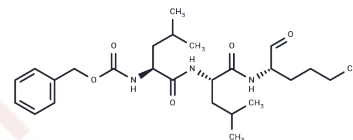
Formula: C<sub>26</sub>H<sub>41</sub>N<sub>3</sub>O<sub>5</sub>

Molecular Weight: 475.62

Keep away from moisture

Storage: Powder: -20°C for 3 years | In solvent: -80°C for 1 year

Actual storage temperature shall be subject to the COA.



## Biological Description

Description	Z-LLNle-CHO is a cell permeable inhibitor of gamma-secretase. Z-LLNle-CHO induces apoptosis of human glioblastoma tumor-initiating cells by proteasome inhibition and mitotic arrest response.
Targets(IC50)	Apoptosis, Proteasome, Gamma-secretase

## Preparing Stock Solutions

	1mg	5mg	10mg
1 mM	2.1025 mL	10.5126 mL	21.0252 mL
5 mM	0.4205 mL	2.1025 mL	4.205 mL
10 mM	0.2103 mL	1.0513 mL	2.1025 mL
50 mM	0.0421 mL	0.2103 mL	0.4205 mL

Please select the appropriate solvent to prepare the stock solution, according to the solubility of the product in different solvents. Please use it as soon as possible.

Note: The dilution table applies only to solid products. For liquid products, please calculate the stock solution based on the stated concentration and/or density.

### Reference

- Ikezawa Y, Sakakibara-Konishi J, Mizugaki H, Oizumi S, Nishimura M. Inhibition of Notch and HIF enhances the antitumor effect of radiation in Notch expressing lung cancer. *Int J Clin Oncol*. 2017 Feb;22(1):59-69. doi: 10.1007/s10147-016-1031-8. Epub 2016 Aug 23. PubMed PMID: 27553958.
- Han B, Liu SH, Guo WD, Zhang B, Wang JP, Cao YK, Liu J. Notch1 downregulation combined with interleukin-24 inhibits invasion and migration of hepatocellular carcinoma cells. *World J Gastroenterol*. 2015 Sep 7;21(33):9727-35. doi: 10.3748/wjg.v21.i33.9727. PubMed PMID: 26361419; PubMed Central PMCID: PMC4562956.
- Lee HW, Kim SJ, Choi IJ, Song J, Chun KH. Targeting Notch signaling by  $\gamma$ -secretase inhibitor I enhances the cytotoxic effect of 5-FU in gastric cancer. *Clin Exp Metastasis*. 2015 Aug;32(6):593-603. doi: 10.1007/s10585-015-9730-5. Epub 2015 Jul 2. PubMed PMID: 26134677.
- Yao M, Wang X, Wang X, Zhang T, Chi Y, Gao F. The Notch pathway mediates the angiotensin II-induced synthesis of extracellular matrix components in podocytes. *Int J Mol Med*. 2015 Jul;36(1):294-300. doi: 10.3892/ijmm.2015.2193. Epub 2015 Apr 22. PubMed PMID: 25902289.

**Inhibitor · Natural Compounds · Compound Libraries · Recombinant Proteins**

This product is for Research Use Only · Not for Human or Veterinary or Therapeutic Use

Tel:781-999-4286 E\_mail:info@targetmol.com Address:34 Washington Street,Wellesley Hills,MA 02481