

BO 1236

Chemical Properties

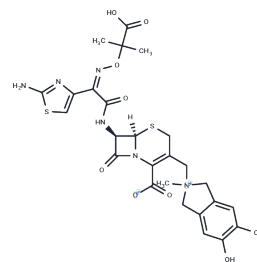
CAS No. : 105358-77-8

Formula: C₂₆H₂₈N₆O₉S₂

Molecular Weight: 632.66

Storage: Powder: -20°C for 3 years | In solvent: -80°C for 1 year

Actual storage temperature shall be subject to the COA.



Biological Description

Description	BO-1236 is an antipseudomonal cephalosporin.
Targets(IC50)	Others,Antibiotic

Preparing Stock Solutions

	1mg	5mg	10mg
1 mM	1.5806 mL	7.9031 mL	15.8063 mL
5 mM	0.3161 mL	1.5806 mL	3.1613 mL
10 mM	0.1581 mL	0.7903 mL	1.5806 mL
50 mM	0.0316 mL	0.1581 mL	0.3161 mL

Please select the appropriate solvent to prepare the stock solution, according to the solubility of the product in different solvents. Please use it as soon as possible.

Note: The dilution table applies only to solid products. For liquid products, please calculate the stock solution based on the stated concentration and/or density.

Reference

Nakagawa S, Sanada M, Matsuda K, Hazumi N, Tanaka N. Biological activity of BO-1236, a new antipseudomonal cephalosporin. *Antimicrob Agents Chemother.* 1987 Jul;31(7):1100-5. PubMed PMID: 3116919; PubMed Central PMCID: PMC174878.

Valiant ME, Gilfillan EC, Gadebusch HH, Pelak BA. L-658,310, a new injectable cephalosporin. II. In vitro and in vivo interactions between L-658,310 and various aminoglycosides or ciprofloxacin versus clinical isolates of *Pseudomonas aeruginosa*. *J Antibiot (Tokyo).* 1989 May;42(5):807-14. PubMed PMID: 2498278.

Weissberger BA, Abruzzo GK, Fromtling RA, Gill C, Ponticas S, Valiant ME, Shungu DL, Gadebusch HH. L-658,310, a new injectable cephalosporin. I. In vitro antibacterial properties. *J Antibiot (Tokyo).* 1989 May;42(5):795-806. PubMed PMID: 2498277.

Hashizume T, Sanada M, Nakagawa S, Tanaka N. Comparison of transport pathways of catechol-substituted cephalosporins, BO-1236 and BO-1341, through the outer membrane of *Escherichia coli*. *J Antibiot (Tokyo).* 1990 Dec;43(12):1617-20. PubMed PMID: 2276982.

Inhibitor · Natural Compounds · Compound Libraries · Recombinant Proteins

This product is for Research Use Only · Not for Human or Veterinary or Therapeutic Use

Tel:781-999-4286 E_mail:info@targetmol.com Address:34 Washington Street,Wellesley Hills,MA 02481