

GW406108X

Chemical Properties

CAS No. : 1644443-92-4

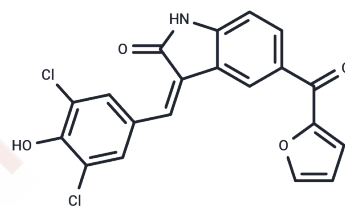
Formula: C₂₀H₁₁Cl₂N₂O₄

Molecular Weight: 400.21

Store at low temperature

Storage: Powder: -20°C for 3 years | In solvent: -80°C for 1 year

Actual storage temperature shall be subject to the COA.



Biological Description

Description	GW406108X (GW108X) is a Kif15 inhibitor with an IC ₅₀ of 0.82 μM in ATPase assays. GW406108X is also an ULK1 kinase inhibitor with pIC ₅₀ values of 6.37 (427 nM) and block autophagic flux.
Targets(IC ₅₀)	Autophagy, Kinesin
In vitro	GW406108X were acting upon ULK1 and autophagy without affecting mTOR or AMPK activity as shown by monitoring ULK1 pS758 (mTOR site) or pS556 (AMPK site) levels[1].

Solubility Information

Solubility	DMSO: 45 mg/mL (112.44 mM), Sonication is recommended. (< 1 mg/ml refers to the product slightly soluble or insoluble)
------------	--

Preparing Stock Solutions

	1mg	5mg	10mg
1 mM	2.4987 mL	12.4934 mL	24.9869 mL
5 mM	0.4997 mL	2.4987 mL	4.9974 mL
10 mM	0.2499 mL	1.2493 mL	2.4987 mL
50 mM	0.050 mL	0.2499 mL	0.4997 mL

Please select the appropriate solvent to prepare the stock solution, according to the solubility of the product in different solvents. Please use it as soon as possible.

Note: The dilution table applies only to solid products. For liquid products, please calculate the stock solution based on the stated concentration and/or density.

Reference

Zachari M , Rainard J M , Pandarakalam G C , et al. The Identification and characterisation of autophagy inhibitors from the published kinase inhibitor sets[J]. Biochemical Journal, 2020, 477(4).

Inhibitor · Natural Compounds · Compound Libraries · Recombinant Proteins

This product is for Research Use Only· Not for Human or Veterinary or Therapeutic Use

Tel:781-999-4286 E_mail:info@targetmol.com Address:34 Washington Street,Wellesley Hills,MA 02481