

Etilevodopa hydrochloride

Chemical Properties

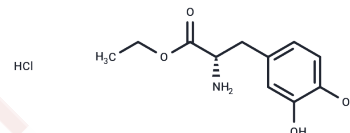
CAS No. : 39740-30-2

Formula: C₁₁H₁₆ClNO₄

Molecular Weight: 261.7

Storage: Pure form: -20°C for 3 years | In solvent: -80°C for 1 year

Actual storage temperature shall be subject to the COA.



Biological Description

Description	Etilevodopa hydrochloride (L-DOPA ethyl ester) is a prodrug of levodopa. It also has greater gastric solubility and significant brain penetration.
Targets(IC50)	Dopamine Receptor, Drug Metabolite

Solubility Information

Solubility	H ₂ O: 120 mg/mL (458.54 mM), Sonication is recommended. (< 1 mg/ml refers to the product slightly soluble or insoluble)
------------	--

Preparing Stock Solutions

	1mg	5mg	10mg
1 mM	3.8212 mL	19.1058 mL	38.2117 mL
5 mM	0.7642 mL	3.8212 mL	7.6423 mL
10 mM	0.3821 mL	1.9106 mL	3.8212 mL
50 mM	0.0764 mL	0.3821 mL	0.7642 mL

Please select the appropriate solvent to prepare the stock solution, according to the solubility of the product in different solvents. Please use it as soon as possible.

Note: The dilution table applies only to solid products. For liquid products, please calculate the stock solution based on the stated concentration and/or density.

Reference

Bayés M, Rabasseda X, Prous JR. Gateways to clinical trials. Methods Find Exp Clin Pharmacol. 2003 Apr;25(3):225-48.

Inhibitor · Natural Compounds · Compound Libraries · Recombinant Proteins

This product is for Research Use Only · Not for Human or Veterinary or Therapeutic Use

Tel:781-999-4286 E_mail:info@targetmol.com Address:34 Washington Street,Wellesley Hills,MA 02481