

$\beta$ -Lactamase-IN-8

## Chemical Properties

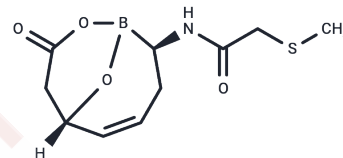
CAS No. : 1929555-36-1

Formula: C<sub>10</sub>H<sub>14</sub>BNO<sub>4</sub>S

Molecular Weight: 255.1

Storage: Powder: -20°C for 3 years | In solvent: -80°C for 1 year

Actual storage temperature shall be subject to the COA.



## Biological Description

Description	$\beta$ -Lactamase-IN-8 (compound 20) is a potent, orally bioavailable, broad-spectrum cyclic boronate $\beta$ -lactamase inhibitor for antibacterial research [1].
Targets(IC50)	Others, Antibacterial

## Preparing Stock Solutions

	1mg	5mg	10mg
1 mM	3.920 mL	19.6002 mL	39.2003 mL
5 mM	0.784 mL	3.920 mL	7.8401 mL
10 mM	0.392 mL	1.960 mL	3.920 mL
50 mM	0.0784 mL	0.392 mL	0.784 mL

Please select the appropriate solvent to prepare the stock solution, according to the solubility of the product in different solvents. Please use it as soon as possible.

Note: The dilution table applies only to solid products. For liquid products, please calculate the stock solution based on the stated concentration and/or density.

Inhibitor · Natural Compounds · Compound Libraries · Recombinant Proteins

This product is for Research Use Only · Not for Human or Veterinary or Therapeutic Use

Tel: 781-999-4286 E\_mail: info@targetmol.com Address: 34 Washington Street, Wellesley Hills, MA 02481