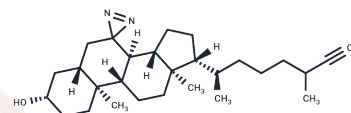


LKM38

## Chemical Properties

CAS No. : 2103360-95-6  
 Formula: C<sub>28</sub>H<sub>44</sub>N<sub>2</sub>O  
 Molecular Weight: 424.66  
 Storage: Powder: -20°C for 3 years | In solvent: -80°C for 1 year  
 Actual storage temperature shall be subject to the COA.



## Biological Description

Description	LKM38, a novel diazolidinyl cholesterol probe, is a promising cholesterol mimetic. LKM38 both maintains cholesterol-resistant cell growth and appropriately regulates key cholesterol homeostatic pathways. LKM38 can be a powerful tool for studying cholesterol protein interactions and trafficking.
Targets(IC50)	Others
In vitro	LKM38 emerged as a promising cholesterol mimic because it both sustained the growth of cholesterol-auxotrophic cells and appropriately regulated key cholesterol homeostatic pathways. When presented as an ester in lipoprotein particles, LKM38 initially localized to the lysosome and subsequently trafficked to the plasma membrane and endoplasmic reticulum. LKM38 bound to diverse, established cholesterol binding proteins. Through a detailed characterization of the cellular behavior of a panel of diazirine alkyne probes using cell biological, biochemical trafficking assays and immunofluorescence approaches, we conclude that LKM38 can serve as a powerful tool for the study of cholesterol protein interactions and trafficking.[1]

## Preparing Stock Solutions

	1mg	5mg	10mg
1 mM	2.3548 mL	11.7741 mL	23.5483 mL
5 mM	0.471 mL	2.3548 mL	4.7097 mL
10 mM	0.2355 mL	1.1774 mL	2.3548 mL
50 mM	0.0471 mL	0.2355 mL	0.471 mL

Please select the appropriate solvent to prepare the stock solution, according to the solubility of the product in different solvents. Please use it as soon as possible.

Note: The dilution table applies only to solid products. For liquid products, please calculate the stock solution based on the stated concentration and/or density.

Reference

Feltes M, et al. Synthesis and characterization of diazirine alkyne probes for the study of intracellular cholesterol trafficking. J Lipid Res. 2019;60(3):707-716.

Budelier MM, et al. Photoaffinity labeling with cholesterol analogues precisely maps a cholesterol-binding site in voltage-dependent anion channel-1. J Biol Chem. 2017;292(22):9294-9304.

**Inhibitor · Natural Compounds · Compound Libraries · Recombinant Proteins**

This product is for Research Use Only · Not for Human or Veterinary or Therapeutic Use

Tel:781-999-4286 E\_mail:info@targetmol.com Address:34 Washington Street,Wellesley Hills,MA 02481